



*for a living planet®*



# WWF Nepal

Annual Report 2008-2009



# Message from the Country Representative

Climate Change is posing to be one of the most formidable threats to biodiversity conservation and sustainable development the world over – more so in a Himalayan country like Nepal. As the leading global conservation organization, WWF has taken leadership on wide array of issues related to Climate Change ranging from addressing the negative impacts of Climate Change on biodiversity and the communities dependent on it, to raising awareness among decision makers and general public.

Following WWF's global priorities and the ground realities of Nepal, this year we launched our first pilot project on Climate Adaptation, possibly the first of its kind in the country. The project has adopted an integrated approach to Climate Change in the Langtang National Park and Buffer Zone. We also piloted water-based climate adaptation work at two pilot sites in the Koshi River Basin in partnership with Water and Energy Commission Secretariat. It is the first project in Nepal to implement the National Water Plan 2005.

With an aim to contribute to low carbon development in Nepal, we are promoting alternative energy usage through smart interventions in our priority landscapes – the Terai Arc Landscape and the Sacred Himalayan Landscape. As another milestone this year, we successfully piloted Nepal's first Gold Standard Biogas VER Project. In collaboration with Alternative Energy Promotion Center and Biogas Sector Partnership Nepal, we have devised a mechanism that will ensure that financial resources brought in through carbon-financing is ploughed back to the communities in the WWF Nepal's program areas.

The "Climate for Life" campaign was yet another highlight of the year. The global climate change communications campaign called "Climate for Life" was launched by sending the world record holder mountaineer Mr. Apa Sherpa to the top of the world – Mt. Everest on 21 May 2009. Mr. Sherpa gave a grave message to the world "Stop

Climate Change. Let the Himalayas Live" that brought world wide media attention to the impacts of Climate Change in the Himalayas. The campaign aims to raise the profile of the Himalayas in the global climate debate with multiple events throughout the year 2009.

Snow leopard is one of the most vulnerable species in the wake of Climate Change because of their habitat in the high altitudes. A first ever nationwide population estimation of snow leopard was accomplished and we also initiated several interventions to reduce the impacts of anthropogenic activities on this iconic species.

Likewise, for the first time, the Terai Arc Landscape Program successfully estimated the nationwide tiger population. The dwindling numbers of tigers in Western Nepal particularly in Shuklaphanta Wildlife Reserve is alarming and asks for smarter and effective interventions in the time to come.

In memory of the conservation heroes that the country lost in the tragic helicopter accident in 2006, the Government of Nepal declared 23 September as National Conservation Day. We acknowledge the support of the conservation consortium comprising of all prominent conservation organizations in Nepal for their important role in this declaration.

I will take this opportunity to thank the Government of Nepal particularly Ministry of Forests and Soil Conservation, Ministry of Environment, Water and Energy Commission Secretariat, Social Welfare Council, Department of Forest and Department of National Parks and Wildlife Conservation for their continued support. I also thank the bilateral and multilateral donor agencies, foundations, local NGOs and CBOs and local communities. Finally, I extend my sincere appreciation to the entire WWF Network for their unprecedented support to accomplish so many milestones this year.



A handwritten signature in black ink that reads "Manandhar".

**Anil Manandhar**  
Country Representative

# Acronyms

AEPC	Alternative Energy Promotion Center	LNP	Langtang National Park
BCF	Biodiversity Conservation Forum	LNPBZ	Langtang National Park Buffer Zone
BNP	Bardia National Park	MOE	Ministry of Environment
BZCFUG	Buffer Zone Community Forest User Group	MOFSC	Ministry of Forests and Soil Conservation
BZMC	Buffer Zone Management Committee	NGO	Non Governmental Organization
BZUC	Buffer Zone Users Committee	NMCP	Northern Mountain Conservation Project
CBAPO	Community Based Anti Poaching Operation	NTFP	Non Timber Forest Products
CBO	Community Based Organization	NTNC	National Trust for Nature Conservation
CBRP	Corridor and Bottleneck Restoration Project	PA	Protected Area
CFCC	Community Forest Coordination Committee	PWBR	Participatory Well Being Ranking
CFUG	Community Forest User Group	PWR	Parsa Wildlife Reserve
CITES	Convention on International Trade of Endangered Species of Flora and Fauna	SHL	Sacred Himalayan Landscape
CNP	Chitwan National Park	SLA	Sustainable Livelihoods Approach
DNPWC	Department of National Parks and Wildlife Conservation	SLCC	Snow Leopard Conservation Committee
GON	Government of Nepal	SNP	Sagarmatha National Park
HAW	High Altitude Wetland	SNPBZ	Sagarmatha National Park Buffer Zone
IUCN	The World Conservation Union	SPNP	Shey Phoksundo National Park
ICIMOD	International Centre for Integrated Mountain Development	SWR	Shuklaphanta Wildlife Reserve
IRBM	Integrated River Basin Management	TAL	Terai Arc Landscape
IWRM	Integrated Water Resource Management	UNFCCC	United Nations Framework Convention on Climate Change
KCA	Kangchenjunga Conservation Area	VDC	Village Development Committee
KCAMC	Kangchenjunga Conservation Area Management Council	VER	Verified Emission Reduction
KRBM	Koshi River Basin Management	WECS	Water and Energy Commission Secretariat
LIS	Livestock Insurance Scheme	WTLCF	Western Terai Landscape Complex Project
		WWF	World Wide Fund for Nature



# *Contents*

<b>WWF in Nepal</b>	<b>2</b>
<b>The Terai Arc Landscape</b>	<b>6</b>
<b>The Sacred Himalayan Landscape</b>	<b>10</b>
<b>Climate Change and Energy</b>	<b>14</b>
<b>Freshwater - Conserving the Himalayan Water Towers</b>	<b>18</b>
<b>Curbing Illegal Wildlife Trade</b>	<b>21</b>
<b>Providing Sustainable Livelihoods Alternatives</b>	<b>23</b>
<b>Communicating Conservation</b>	<b>26</b>
<b>Conservation Education</b>	<b>28</b>
<b>WWF's International and Regional Programs</b>	<b>31</b>
<b>Financial Overview</b>	<b>34</b>
<b>Highlights of 2008-2009</b>	<b>35</b>
<b>Acknowledgements</b>	<b>37</b>



# WWF in Nepal

Since 1961, WWF has worked to conserve nature and ecological processes through a combination of actions on the ground, national and international advocacy work to establish appropriate policies, and international campaigns to highlight and demonstrate solutions to crucial environmental problems.

WWF has been working in Nepal since 1967 when it launched a rhino conservation program in Chitwan. To keep up with the evolving face of conservation and the environmental movement, WWF's focus has evolved from its localized efforts in conservation of single species in the 1960s, integrated conservation and development approach in 1990s, to new horizons of landscape level conservation encompassing national, regional and global scales of complexity in the early 2000s.

WWF's program interventions and support in Nepal have been based on a strategic plan developed in wider consultation with its partners in the government and other stakeholders. It is also aligned to the organization's global program framework.

## Sustainable forest management

WWF aims to protect the forest ecosystem under the protected area system, manage critical forests in corridors, bottlenecks and biodiversity hotspots and restore degraded forests. WWF has put local communities at the forefront to restore and regenerate forests and biological corridors through community forestry in Nepal. This has fostered a sense of ownership among the people living on the fringe areas of national parks who depend on subsistence agriculture and forest products for their livelihoods.

## Conserving the mega faunas

WWF contributes to the establishment of ecologically, demographically and genetically viable populations of key species - the Bengal tiger, the Greater one horned rhinoceros, the Asian elephant and the Snow Leopard. WWF has been working with the government to strengthen conservation plans and policies and to address trans-boundary issues. Recognizing the substantial role of people based conservation activities, WWF has prioritized specific species conservation actions focused on sustainable livelihoods. This has garnered community's support in the conservation of the endangered species.

## Tackling climate change

WWF focuses on increasing the understanding of impacts of climate change, assessing vulnerabilities, implementing adaptation measures, contributing to Nepal's position in international negotiations and raising awareness locally as well as internationally. WWF has been introducing and piloting appropriate renewable energy technologies at project locations in Terai as well as mountains while promoting low carbon development in Nepal. WWF is also working hard to bring the benefits of carbon financing to the communities.





### **Managing freshwater systems**

WWF emphasizes on the sustainable management of freshwater systems in Nepal to ensure healthy environmental processes and the wise use of wetland resources. WWF, in partnership with the Government of Nepal, has envisioned the Koshi River Basin Management (KRBM) Project following the directives of National Water Plan. Pilot activities under this project are already on at couple of sites in the basin, the learning from which will be shared and applied to the entire river basin. The project works towards promoting and institutionalizing policies and practices for optimal use of available water and related resources in the basin. These efforts will ensure sustained socio-economic development while maintaining the integrity of ecological processes.

### **Securing sustainable livelihoods**

WWF recognizes people's dependence on forest and other natural resources to meet their livelihood needs. WWF has been working to enhance capacities and promote participation of local communities to sustainably manage the natural resources. The income generation opportunities such as agro-based and forest based opportunities and small-scale enterprise development promoted by WWF have been instrumental in improving livelihoods and motivating communities towards conservation in all its project areas in Nepal.

### **Policy and advocacy**

WWF strives to create a conducive policy environment for the effective implementation of conservation programs. In addition to being a responsible and dependable partner of the Government of Nepal and helping the GON devise effective policies in Natural Resource Management sector, WWF has been playing an active role providing technical inputs to Constituent Assembly of Nepal in framing Nepal's new constitution, and ensuring that 'sustainability' is mainstreamed into its essence. With an aim to build a society with young people dedicated to nature conservation, WWF is actively engaged in strengthening the capacities of community based institutions and motivating the youth towards conservation.

### **Curbing illegal wildlife trade**

WWF works towards curbing illegal wildlife trade and poaching in coordination with enforcement agencies of Government of Nepal and other appropriate authorities. WWF supported community-based anti-poaching operations have added new dimension to its work making the anti-poaching efforts much more widespread and effective. WWF network offices in the region work together to facilitate trans-boundary cooperation among the authorities of neighboring countries in the region to combat illegal trafficking of wildlife parts and their derivatives.

### **Communicating conservation**

WWF aims to increase awareness and positively influence attitude of people towards biodiversity conservation and sustainable development. Through its communications and marketing activities WWF works towards bringing transformational changes in the society. By highlighting field successes of project interventions WWF encourages replication of such activities by other like minded agencies.

### **Conservation education**

WWF runs several innovative education programs to engage and encourage the communities, particularly the youth to participate in activities supporting biodiversity conservation and sustainable development. WWF promoted Eco Clubs play a significant role in such efforts.

### **Transforming business**

WWF works with companies to help them change the way they do business. WWF's approach in working with the private sector is constructive and solutions-oriented. It is both collaborative in its methods and challenging in its objectives. At the same time it is always forward-looking.





# The Terai Arc Landscape

The Terai Arc Landscape (TAL) is the biggest and most ambitious conservation endeavor in Nepal. It covers approximately 49,500 sq. km. from Nepal's Bagmati River in the east to India's Yamuna River in the west, linking a network of 15 transborder protected areas, national forests, and water bodies in both countries. In Nepal, Terai Arc Landscape covers approximately 23,199 sq. km. from Bagmati River in the east to Mahakali River in the west. The rich grasslands and forests provide critical habitat for rhinos, tigers, elephants and much more and is also home to more than 6.7 million people who depend on its resources for their livelihoods. TAL is a joint initiative of Government of Nepal and WWF that involves a large number of partner organizations, donor agencies, stakeholders, community based organizations and local people.

This year, WWF provided support to the four protected areas covering 270,400 hectares in TAL for habitat management, species conservation, anti-poaching operations and infrastructural supports. The habitat management included 664 hectares grassland management, waterholes and fire-lines construction. Similarly, species conservation included research and monitoring, and infrastructural supports such as construction of guard posts, elephant stables, causeways and bridges.

## **Sustainable forest management**

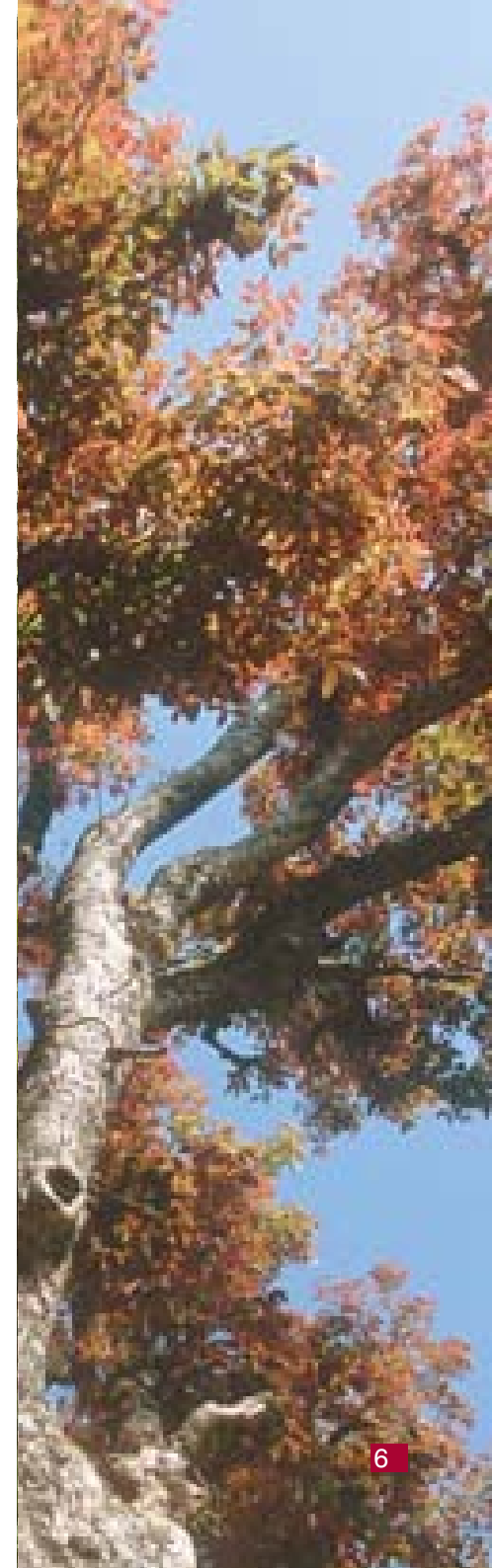
Promotion of community forestry to ensure environmental balance, alternative energy to reduce pressure on nearby forest, capacity building of community forest user groups and strengthening community based anti-poaching operations were carried out under forest management activities. Under community based micro finance interventions 1,384 toilet attached biogas and 360 improved cooking stoves were installed. Forest area covering 8,244 hectares was handed over to 47 new CFUGs and 223 hectares encroached forest area was restored by evicting 2,778 illegal huts, and planting saplings of indigenous plant species.

## **Estimation of nationwide tiger population**

Camera-trap, patch occupancy and distance sampling methods were employed to estimate the population of tiger and its prey base. The survey revealed the presence of 121 adult tigers in Terai Arc Landscape Nepal. This is the first ever nation wide scientific population estimation of tigers in Nepal and shall serve as a baseline for the years to come. This year, Government of Nepal also approved the Tiger Monitoring Protocol.

## **Protecting tigers and rhinos from poaching**

The prime focus of TAL program was to protect tigers, rhinos and other key species from poaching. Supports were provided to government line agencies and community based organizations for effective mobilization of CBAPOs to curb illegal activities in the wildlife habitats and to avert poachers from entering into the PAs. Their capacity was enhanced through training, orientations and logistic support. Only one incident of rhino poaching was reported in the Chitwan National Park. No poaching was reported outside PAs across Terai Arc Landscape Nepal, making it a remarkable achievement in species conservation.





Greater one-horned rhinoceros

### Carbon incentives for saving tigers

A forest carbon project was initiated in TAL along the riverine forests of the Rapti floodplains to save tigers, their prey base and their habitat. A baseline of carbon stocks of the project area was prepared which will be proposed for a legal benefit sharing mechanism from a voluntary market. These activities are directed towards restoring the high quality breeding habitats for tigers and at the same time providing benefits to the local communities from carbon finances as an incentive for restoration.

### Forming networks of community based organizations

A Biodiversity Conservation Forum (BCF) was established in the Terai Arc Landscape Nepal with the purpose to collectively advocate on conservation issues in the landscape. The BCF is a consortium of CFCCs, BZMCs, BZUCs and other relevant NGOs working for biodiversity conservation in the landscape. The newly formed BCF represents 256,820 households of TAL Nepal. The BCF will be strengthened and mobilized to continue support for the landscape level conservation vision.



© WWF Nepal

Alternative crop - camomile

### Providing economic opportunities

Nine hundred and nineteen households received financial support for income generating activities (IGA) from the community-managed micro credit schemes. The communities made an additional income of over USD 100,000 through various IGA programs supported by the project. The IGA programs ensures sustainable livelihood of the communities that are actively engaged in conservation.

### Reducing human wildlife conflict

More than 5,000 households benefited from the TAL supported activities to reduce human wildlife conflict. Such activities included electric fencing, livestock insurance scheme, human-wildlife conflict relief fund and alternative crop promotion which act as a deterrent for wildlife. The alternative crops included mentha and camomile.



© WWF Nepal

IGA - vegetable farming



Biogas plant

## “The communities made an additional income of over USD 100,000 through various IGA programs supported by TAL Nepal.”

### Success Story

#### Water sources sprout back in Lamahi bottleneck

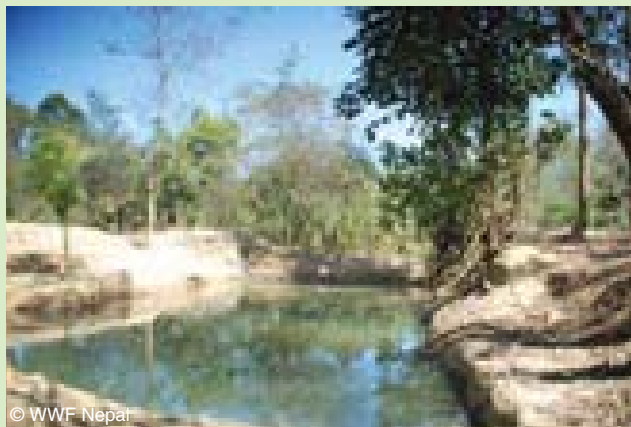
“Just three decades ago, forests in Lamahi bottleneck of Dang district were heavily deforested which led to the disappearance of wildlife and water sources,” says Jokhuram Chaudhary, Chairperson of CFCC, Lamahi. In 2001, TAL came up with a vision of landscape level conservation approach. Within a span of eight years, it has brought tremendous and tangible change in forest conservation and community development.

“There was a huge scarcity of water in the forests when we started protecting the forests but as the conditions gradually improved, water sources started reappearing,” says Chaudhary. According to the CFCC sources, over 120 such natural water sources have been recorded in 22 different community forests after starting the forest conservation activities. In 2008, 16 new water sources were discovered in six community forests.

“Despite the increasing number of water sources, we felt the need to provide easy access to water for the wild animals,” says Hari Prasad Shrestha, Chairperson of the Ramjhadi Community Forest. “TAL provided technical and financial support to the communities to manage the water sources. It will prevent possible conflict of animals with humans for available water as the wild animals did not have proper access to water.”

“After the restoration of forest, the place has become a natural habitat for various species of animals like leopard, bear, wild boar and jackals, and birds,” said Padma Adhikari, a forest guard of the same community forest.

“People are well aware of the fact that the water sources in the community forests could go dry if they are not taken care of,” says Chaudhary, the Chairperson.



© WWF Nepal

Community managed water source

## Estimating Tiger and Prey Base Abundance in the Terai Arc Landscape Nepal

Tiger conservation has been one of the key priorities of the Terai Arc Landscape Nepal. Being the abode to the Bengal tigers, TAL is also known as the tiger landscape. This year, WWF Nepal estimated the nationwide population of tiger and its prey base. In Nepal, the tiger (*Panthera tigris tigris*) populations are distributed in the four protected areas – Parsa Wildlife Reserve, Chitwan National Park, Bardia National Park and Shuklaphanta Wildlife Reserve.

The survey followed three contemporary approaches of assessing animal abundance and distribution

1. Camera trap surveys were conducted to estimate tiger populations in the four Protected Areas
2. Line transect surveys were conducted to assess the prey abundance in the Protected Areas
3. Habitat occupancy modelling was done to examine the tiger distribution pattern in both inside and outside of the Protected Areas

Camera trap surveys were undertaken during December 2008 - March 2009 by systematically placing 150 pairs of passive cameras in designated blocks of all the PAs. With a total sampling effort of 10,305 trap nights in all PAs, a total of 86 individual tigers were identified on the basis of their unique stripe pattern on the flanks, legs and face. Using closed capture-recapture sampling framework as provided by program CAPTURE 2, a total of 121 adult tigers (i.e. except cubs and juveniles) were estimated in all the PAs.

Similarly, the abundance of tiger's prey animals were estimated by employing line transects surveys within the Distance Sampling framework. A total of 463 transects each with 2 km length were systematically surveyed for wild prey animals. Software DISTANCE version 6 was used for survey design and data analysis. Shuklaphanta Wildlife Reserve had the highest density of prey population with the estimated density of 86.20 animals/km<sup>2</sup> followed by Bardia National Park and Chitwan National Park with the density of 67.84 animals/km<sup>2</sup> and 62.61 animals/km<sup>2</sup> respectively. Unlike other parks Parsa Wildlife Reserve had very low prey density of 5.51 animals/km<sup>2</sup>.



© WWF Nepal

Camera trapped image



# The Sacred Himalayan Landscape

The Sacred Himalayan Landscape, extends upto 30,021 sq. km. from Langtang National Park in central Nepal through the Kangchenjunga region in Sikkim and Darjeeling in India to Toorsa Strict Nature Reserve in western Bhutan. In Nepal, the Sacred Himalayan Landscape covers an area of 28,680 sq. km. extending from Langtang National Park in central Nepal to the Kangchenjunga Conservation Area that houses world's third highest peak Mt. Kangchenjunga in the East including Sagarmatha National Park that houses world's highest peak Mt. Everest. The SHL Nepal program aims to conserve the rich biodiversity, enhance local livelihood needs and sustain diverse culture and traditions in the globally important Eastern Himalayan Eco-region. The landscape is home to more than 3.7 million people of which 60 percent are living below the poverty line. Many of the mountain people in SHL Nepal are indigenous to the land and largely depend on natural resources for their livelihoods. This landscape is a habitat to endangered and elusive snow leopards and red pandas, and endemic varieties of plants are found in abundance in the region.

This year, WWF provided support to manage a total of 139,500 hectares of buffer zone forests in Langtang National Park, Sagarmatha National Park and Kanchenjunga Conservation Area.

The population estimates of snow leopards and musk deer were conducted, and alternative farming practices were promoted to reduce human wildlife conflict. Alternative energy technologies were promoted to tackle the vulnerabilities of local communities and to reduce pressure on the forests.

## **Sustainable forest management**

WWF continued to provide technical support to BZCFUGs, CFUGs, mother groups and CBAPOUs for effective forest management. As a result, the local communities are effectively managing 69,500 hectares of buffer zone forests by forming buffer zone community forest user groups in Langtang National Park and Buffer Zone and Sagarmatha National Park and Buffer Zone areas. In addition, 70,000 hectares of priority forests are being effectively managed by 27 Conservation CFUGs in the Kangchenjunga Conservation Area. Similarly, 18,000 hectares of forests are under restoration through plantation and natural regeneration in Langtang National Park and Buffer Zone and Kangchenjunga Conservation Area.

## **Estimation of snow leopard population**

The snow leopard population was estimated all across the Nepal Himalayas. The estimated snow leopard population is 358 all across Nepal including 39 in the Sacred Himalayas Landscape Nepal. The estimation shows an average density of 1.43 snow leopards per 100 km<sup>2</sup> in SHL (that includes Rolwaling complex, Sagarmatha complex, Makalu Barun complex and Kangchenjunga complex). Similarly, the average population density of musk deer is estimated to be 29.3/km<sup>2</sup> in LNP and 18.2/km<sup>2</sup> in KCA within SHL.





© WWF Nepal

Local communities learning nursery techniques of chiraito

### Reducing human wildlife conflict

The establishment of Livestock Insurance Scheme (LIS) in LNPBZ, and KCA and establishment of human wildlife conflict (HWC) mitigation fund have proved to be very effective in reducing the human wildlife conflict in the area. The HWC mitigation fund amounting NRS 600,000 and NRS 1,460,000 was established in buffer zone of LNP and in KCA, respectively. The LIS is administered by Snow Leopard Conservation Committee.

Additionally, to reduce the vulnerability of the communities from crop depredation alternative farming practices such as chiraito (*Swertia chiraita*) cultivation and integrated cropping practices were promoted.

The formation and active mobilization of 24 community based anti poaching operation units and 14 snow leopard conservation committees have reduced poaching and illegal logging in the SHL Nepal. The effective and frequent joint patrolling by a team of security personnel, national park staff and these local institutions has contributed in bringing the result. Moreover, both the records of the buffer zone of Langtang National Park and Sagarmatha National Park show no case of poaching and wildlife trade this year.

### Providing economic opportunities

The income generating activities promoted by the SHL Program provided increased economic benefits to 2,800 households. Five cooperative were supported and strengthened to encourage the communities. The IGAs included forest, agriculture, and eco-tourism based IGAs, business development services, and enterprise opportunities such as essential oil extraction of sunpati (*Rhododendron anthopogon*) and dhupi (*Juniperus recurva*) in the KCA, and wintergreen (*Gauntheria fragrantissima*) in the LNP.

Following the legalization of collection and trade of kutki (*Neopicrorhiza scrophulariiflora*) from the Conservation Community Forests of KCA, the communities are motivated towards sustainable harvesting of the non timber forest products from the CFs.



**“With WWF’s continued support, the local communities are effectively managing 69,500 hectares of buffer zone forests by forming buffer zone community forest user groups in Langtang National Park and Buffer Zone and Sagarmatha National Park and Buffer Zone areas.”**

## Success Story

### Community demonstrates leadership to curb poaching

WWF Nepal has formed, supported, and institutionalized 24 CBAPOUs across SHL. A CBAPOU is a unit formed by the local community to curb poaching and stop illegal collection of forest resources. One of them, the Naganche CBAPOU in Syabru, Langtang has been actively mobilizing community members since 2007 especially for red panda habitat management.

“The anti-poaching operations have enhanced community ownership over the community resources and this has really enhanced our enthusiasm” says Ngawang Finju Tamang, Chairperson of Naganche CBAPOU, Syabru, Rasuwa.

The Naganche CBAPOU is providing support to manage the red panda habitat by controlling free grazing, collection of fuelwood, bamboo shoots and other non timber forest products in community forests.

The CBAPOU through their operations, this year were successful in confiscating dead red pandas and traps intended to kill musk deer and birds. Illegal NTFP collectors and poachers with guns and traps were also captured and handed over to the park authority.

Recognizing their dedication and effectiveness of their CBAPOU the Government of Nepal honored the Naganche CBAPOU with an appreciation letter on the occasion of World Environment Day 2009. Chairperson Mr. Tamang said with determination, “we are dedicated to stop poaching and we will continue our efforts to conserve the resources for our future generation”.

## Estimating the Abundance of Snow Leopards in the Nepal Himalayas

The endangered snow leopard (*Panthera uncia*), is distributed across mountain ranges of Central Asia. Due to its elusive behavior, wide distribution in remote areas, and low densities, there are methodological constraints to accurately estimate populations, hampering the design and implementation of effective conservation measures. Taking this in to account, WWF Nepal’s population estimation survey comprised a model that incorporated sign surveys, genetic analyses of scats, and the extent and distribution of potentially suitable habitat to estimate snow leopard population size in Nepal. The estimated snow leopard density varied from 1.5 to 3.2 animals/100 km<sup>2</sup> in the five habitat complexes. In order to convert these density estimates to absolute numbers, the area of available snow leopard habitat was derived by defining ‘good’ and ‘fair’ habitat using the sign data. The overall population estimate for Nepal Himalaya was 301-400 animals. Population estimates based on a predator-prey model were somewhat higher, although the difference was not significant. We believe that our approach combining genetic information and sign surveys with landscape habitat data provides reasonable abundance estimates of cryptic and sparsely distributed species, particularly large carnivores. Such abundance estimates are needed for developing and implementing effective conservation strategies at landscape level scales.

© National Geographic/Steve Winter/WWF





# Climate Change and Energy

The year was a landmark for WWF Nepal's Climate Change and Energy program in many ways. The program's major focus remained international negotiations, policy and advocacy, research, adaptation, carbon financing, low carbon development capacity building and communication. New initiatives were undertaken for climate adaptations in Langtang National Park and Buffer Zone, and at two pilot sites in the Koshi river basin. A massive communications campaign "Climate for Life" was launched to raise awareness on the impacts of Climate Change in the Himalayas among national as well as global audiences.

## Global negotiations

WWF Nepal participated in the UNFCCC negotiations as a government of Nepal delegate. WWF Nepal provided professional advice to Ministry of Environment (then Ministry of Environment, Science and Technology) towards their effective participation and negotiation on behalf of the GoN. Ministry of Environment is the focal point for Nepal for UNFCCC negotiations. The main objective was to lobby for a new and equitable UN treaty entering into force in 2013. It also intended to establish a global carbon market and other mechanisms to promote clean energy investment in all developing countries, and support adaptation in Least Developed Countries and Small Island Developing States.

## National climate change policy

WWF Nepal supported Ministry of Environment (MoE) to draft the National Climate Change Policy through wider stakeholder consultation that stretched across the country and a varied sector of the society. MoE is taking lead to finalize the policy in consultation with other ministries and relevant agencies of the GoN. The draft policy was made available on the websites of MoE for feedback and comments from the general public.

## Climate adaptation and research

To understand the impact of climate change in ecosystems and livelihoods, climate vulnerability assessments were conducted in Langtang National Park and Buffer Zone, Kangchenjunga Conservation Area and Sagarmatha National Park and Buffer Zone. The assessments provided WWF Nepal with a clear roadmap to develop an adaptation framework and a program intervention modality.

A bathometric study of Imja Lake, one of the most vulnerable glacial lakes in the Himalayas was conducted. The study confirmed that the glacial lake is increasing at an alarming rate of 59m per year. The study revealed that the moraine walls are relatively stable at this point, which has provided some degree of relief to the people who are likely to be impacted by the Imja GLOF.



A study on the possibility of extraction of ethanol from *Saccharum spontanium* as biofuel was conducted in partnership with the Kathmandu University. The study showed that the extraction of ethanol was possible. However, it also showed that cheaper and local enzymes and a reactor were necessary for the extraction to be economically feasible. Further analysis will be continued in the future.

### Promoting low carbon development

To promote low carbon development in Nepal, WWF promotes the use of renewable energy as an alternative to traditional fossil fuel based energy options in all its project areas. WWF Nepal established micro hydro power projects totalling 210kW. The 35kW micro hydro plant (Chuserma MHP) commissioned at Sagarmatha National Park and Buffer Zone is estimated to save approximately 500 metric tons of fuelwood annually. In the same vein other alternative technologies such as solar lights, improved cooking stoves, solar hot pots and improved water mills were promoted. Altogether 876 households benefited from these interventions. In addition to contributing to positive conservation outcomes these projects have enhanced the living standards of the local communities generally including improvement in their health and hygiene.

### Leading by example

This year, WWF Nepal has set an example in the entire network by being the first to validate and register a renewable energy project with the Gold Standard. The project has also been verified by the Designated Operational Entity (DoE). The carbon credits generated will be offset through carbon financing so as to help local communities to reap benefits from the carbon market to construct more biogas plants. So far, 3,618 biogas plants have been installed.

WWF Nepal also initiated the first ever forest carbon project along the riverine forests of Rapti flood plains in the Terai Arc Landscape Nepal to create a sub-national baseline. The inventory was collected using local resource persons trained for the same. The Forest Carbon Project will be up-scaled to establish a Tier III data base with the potential to explore opportunities from the voluntary carbon market to establish a nationally appropriate equitable benefit sharing mechanism. Holistically the forest carbon initiative will result in:

- Forest carbon finances for restoration and management of key habitats.
- Livelihood opportunities for local communities, especially among the poor and marginalized and
- High quality breeding habitat for flagship species.

### Climate change in school curriculum

In partnership with the Curriculum Development Centre (CDC), the subject of climate change was incorporated in the curriculum of grades 7, 8 and 9. With this initiative, more than 350,000 students will learn about climate change and climate science annually.

### WWF Nepal – A carbon neutral office

WWF promotes “carbon neutrality” as a business practice among all its partners. WWF Nepal, to set an example for others, bought carbon credits to nullify the CO<sub>2</sub> emissions generated by air travel of all WWF staff. Over the years WWF Nepal intends to calculate the CO<sub>2</sub> emissions coming out of other facets of its business and buy sufficient credits to become a complete carbon neutral entity.



© WWF Nepal  
*Forest carbon inventory training*



© WWF Nepal  
*Weighing the biomass*



© WWF Nepal  
*Measuring a tree's diameter*

## “WWF Nepal bought carbon credits to nullify the CO<sub>2</sub> emissions generated by air travel of all its staff - A step towards becoming a carbon neutral office.”

### Climate Adaptation Pilot Project in Langtang

This year, WWF Nepal launched its first pilot project on climate adaptation in Langtang National Park and Buffer Zone. The community-based Climate Change Adaptation (CCA) project is designed to ensure that the ecosystem services and livelihood strategies in target communities of Langtang National Park Buffer Zone are better managed to reduce risks and increase resilience to climate change and other related drivers.

To achieve this purpose the project is working to deliver a set of six outputs relating to ensuring community access to climate data; mobilizing communities for disaster risk reduction; building resilience of community and ecosystem to climate risks; mainstreaming climate adaptation in local development plan and policy so as to make it climate smart; and communicating the learning and experiences from the project.

The project has established three weather stations in the project area. The community along with the students from Eco Clubs collect data from the weather stations. Taking into account the vulnerabilities of communities to climate related disasters such as landslide and forest fires, the project supports the communities for bio-engineering work to stabilize the land.

In addition, agriculture being the main source of livelihood of the communities, the project is working in collaboration with the District Agriculture Development Office (DADO) to enhance the capacities of the farmers. At this front, a Farmers' Field School - a knowledge sharing platform among farmers and the experts of DADO, has been

initiated in the project area. The project will work with the local farmers to identify the stress tolerant local variety and will revive them through Seed Banking. Crop diversification and agro-biodiversity initiated in the project area will enhance productivity and reduce vulnerability.

Furthermore, the project will promote water smart technologies and will also work to conserve the water sources. The project will promote clean and efficient energy technologies such as improved stoves and biogas. The project will work with local governing bodies to mainstream climate change in the local development plan.





# Freshwater – Conserving the Himalayan Water Towers

WWF Nepal's Freshwater Program's vision is to conserve and sustainably manage the Himalayan water towers and freshwater habitats to benefit people and nature. To attain the vision, the program priorities are to strengthen policy to safeguard freshwater resources, promote institutional coordination and strengthen the institutions and raise awareness on freshwater issues. The program's emphasis is on Integrated River Basin Management (IRBM) in Koshi Basin; conservation and management of high altitude wetlands in SHL Nepal; and conservation of freshwater species like the Gangetic Dolphin (*Platanista gangetica*) in the TAL Nepal.

This year, the Koshi River Basin Management project was initiated in collaboration with the Government of Nepal under the Integrated River Basin Management approach. Furthering the wetlands of international significance, the Government endorsed the site management plans of two high altitude Ramsar sites (Gosaikunda and Gokyo). In addition, Mai Pokhari a mid-hill wetland of religious significance was declared a Ramsar site.

## First field implementation of National Water Plan

WWF Nepal in partnership with the Government of Nepal's Water and Energy Commission Secretariat (WECS) is implementing Integrated River Basin Management (IRBM) approach for the first time in Koshi Basin as recommended by the National Water Plan (NWP) 2005. WWF Nepal and WECS signed a Scope of Cooperation (SOC) on 5 December 2008 and officially established the project office at Salleri in Dudhkoshi Sub Basin on 5 January 2009. Likewise, under the same SOC, WWF Nepal and WECS officially launched the Koshi River Basin Management (KRBM) project at national level on 25 February 2009. For the policy support on issues related to Koshi, a KRBM cell has been established within WECS.



### Developing water smart communities

Under KRBM, field level IRBM activities are being implemented in two catchments namely, Siku catchment and Pankhu catchment in Dudhkoshi Sub Basin. As envisioned by NWP 2005, Integrated Resource Management Committees (IRMCs) were formed and institutionalized in both the catchments. The project supported to strengthen District Water Resource Committee (DWRC) of Solukhumbu district. Besides, six Eco Clubs were established in Siku and Pankhu catchments to mobilize young students for conservation awareness and action. These Eco Clubs work closely with the IRMCs.

Together with the IRMC and the local users, the project demonstrated and trained local people on wise resource management practices in Siku and Pankhu catchments. Altogether four “Water Smart Communities” were promoted with conservation pond, drip and micro sprinkler irrigation system to maximize the use of available water for small scale irrigation for cash crop and vegetable production.

### Managing high altitude wetlands

The site management plans of two high altitude Ramsar sites (Gosaikunda and Gokyo) were endorsed by the Government on 17 October 2008. The site management plans of the two lakes have been an integral part of the Management Plan of Langang National Park and Sagarmatha National Park respectively. WWF conducted a detailed cultural and religious study of Mai Pokhari, a mid-hill wetland of religious significance in eastern Ilam district of Nepal. Mai Pokhari was declared a Ramsar site on 28 October 2008.

### Strengthening the knowledge base

A detailed scientific research is being conducted on climate change impact on freshwater ecosystem of Gokyo. In the process, the depth of the lake was measured for the first time. The depths of three lakes (2nd, 3rd and 4th in series) in Gokyo were measured with Echosounder (depth measuring gauge) in October 2008. The maximum depths of these lakes were 33.3, 43, and 62.4 meters above sea level respectively. In terms of area of the lakes, 4th lake was found to be bigger. Also Bathymetric maps have been prepared for 2nd, 3rd and 4th lakes. Studies on morphometric (mapping) and limnological studies of the three lakes with diatoms as indicator species for climate change are on progress.

Three booklets on cultural and religious significance studies and three fact sheets of the selected wetlands were published to enhance the knowledge base on the Himalayan wetlands.

### Pani Prasad with friends raise awareness on HAW

A booklet on awareness on climate change impacts and high altitude wetlands “Pani Prasad and Friends - off to the High Altitude Wetlands” was published and distributed to schools and Eco Clubs. Pani Prasad, an imaginary character spreads the conservation message to the young students and is fast gaining popularity amongst them.

### Living in harmony with the dolphins

Different skill enhancement trainings were conducted for Sonaha community of Saijana village of Geruwa River, Karnali. Now besides their traditional knowledge on fishing and gold processing, the training has built their capacities to explore the alternative livelihoods means which has enabled them to live in harmony with river dolphins.



*Inaugurating Dudhkoshi Sub Basin project*



*Eco Club members celebrating World Water Day*



*Conservation pond for water smart communities*

## “The Koshi River Basin Management project is the first project in the country to implement the National Water Plan 2005.”

### First successful demonstration of waste management technologies in High Altitude area in Nepal

With the support from WWF, the feasibility study on waste management in Gokyo study was conducted by Environment and Public Health Organization (ENPHO). The recommended waste management technologies have been demonstrated in Gokyo to manage the waste and control pollution in the lake and it included Incinerator and Eco-San toilets and Soak pits in Gokyo. This demonstration is the first to be conducted in Nepal at the High Altitude area above 4,000 m.



*Incinerator*

### Success Story

#### Rewarding shift from subsistence farming

Mr. Musa Sen Rai lives in Homlung village, Moli-9, Okhaldhunga with his wife and three sons. Farming entirely depends on rainfall in his area. The family was facing hardships due to the low productivity caused by the shift in rainfall pattern and drying of spring sources in the recent days.

With the objective of promoting water-smart technologies amongst local users, the KRBM project supported to set up a conservation pond, sets of micro sprinklers and drip irrigation in the community. It was sufficient to irrigate kitchen garden and surrounding farmland of 15 local users including Mr Rai. The local communities also obtained on-the-site skills to handle and sustainably manage this technology.

Mr. Rai made an extra effort for the best use of available water during the water scarce period. “This technology has worked wonders for me and sometimes I cannot believe what I have achieved by using this technology in my kitchen garden” says Mr. Rai in a jovial mood. He sold fresh vegetables worth NRS 12,000 – 15,000 in less than 5 months which constituted only 50% of the total production. On a happy note, he says, “I am extremely pleased that my kitchen garden has become so productive with the use of water-smart technology supported by the KRBM project”. According to Mr. Rai, he produced over 250 kgs of cauliflower, 500-600 kgs of squash, over 250 kgs of potatoes, about 50 kgs of onions and 10-15 kgs of garlic in less than 5 months. Mr Rai proudly added that he completely gave up his annual involvement in wage labor for four months during off-farm season. He believes that his neighbors and relatives will benefit equally from the use of the water-smart technology if properly replicated.



*Mr. Musa Sen Rai - a member of the water-smart community*



*Vegetable farming promotion through conservation pond*

# Curbing Illegal Wildlife Trade

Through its global network and partners, WWF works to find and activate solutions to the problems created by illegal wildlife trade. WWF Nepal has been actively involved in controlling poaching and illegal wildlife trade. WWF's efforts in the fight against illegal wildlife trade include support to enforcement agencies and community based anti-poaching operations (CBAPOs) to curb illegal trade of wildlife and its parts.

This year WWF supported the preparation of a Bill for the implementation of CITES (Convention on International Trade in Endangered Species) in Nepal. Furthermore, WWF also supported establishment of the CITES Units at Department of National Parks and Wildlife Conservation and Department of Forests to work in conjunction with various government agencies to deter poaching and illegal trade of wildlife.

## Partnering with government to curb wildlife crimes

WWF Nepal has developed a close partnership with the Government of Nepal especially with the Department of National Park and Wildlife Conservation, Department of Forests and Metropolitan Police Crime Division in Kathmandu. At the local level, the working relations were strengthened with Protected Areas, District Forest Offices and local police. Similarly, a strong collaboration was developed with the local communities thereby establishing Community Based Organization to effectively curb the wildlife crimes.

## Supporting enforcement agencies in their endeavours

The program supported the enforcement agencies mainly protected areas and forest authorities, and community based anti-poaching operations (CBAPOs). The 'Operation Unicornis' was a success in Chitwan the previous year so this year it was replicated in Western TAL. This has resulted in the reduction of poaching – no poaching of flagship species was reported in western Nepal especially Bardia National Park (BNP) and Suklaphanta Wildlife Reserve (SWR). However, poaching of rhino is still a threat in Chitwan National Park (CNP) despite the rigorous efforts. Due to the concerted efforts, tiger population is almost stable in comparison to the baseline of 2001 wherein 123 breeding population was reported. The recent tiger census reported 121 breeding tiger population in Nepal.

The support to enforcement agencies included trainings and orientations on conservation and enforcement issues and the logistic support for mobility and patrolling. The newly deployed park protection units at different PAs in Terai were also given such orientations. Altogether 730 personnel from different protection units were oriented in all the four



## “The intelligence information and the network of the enforcement authorities arrested more than 25 rhino poachers.”

PAs in Terai. Similarly, 90 bicycles and four motorbikes were provided to the PAs to support their anti-poaching operations in and around the parks. This helped them to arrest poachers, confiscate guns, bullets and other materials used for poaching. Similarly, wooden boats, fishing nets, axes, saws and bicycle with wooden logs were seized.

In order to sensitize several enforcement agencies and judiciary, workshops on CITES and Illegal Wildlife Trade was organized. A total of 120 officials participated representing Regional and District Forest Offices, Regional and District Police Offices, National Parks, Armed Police Force Units, District Attorney General Offices, District Courts, Appellate Courts, District Post Offices, and Custom Offices.

### Wildlife crime convicts arrested

The efforts to curb illegal wildlife trade are presenting concrete results in Nepal. The intelligence information and the network of the enforcement authorities arrested more than 25 rhino poachers including one most wanted poacher and 45 other wildlife poachers. Similarly, locally made guns with accessories were confiscated from different locations. Moreover, the intricate network of illegal trade of wildlife parts is gradually dismantling in Nepal. Two major enforcement actions were successful in arresting six traders and seizing one rhino horn and five leopard skins at the transit points. These efforts and actions were conducted in Mahendranagar-Darchula (Far Western Nepal) - one of the major trade route and the smuggling of wildlife parts through the route was curbed to zero.

### Transboundary cooperation to combat illegal trafficking of wildlife parts

The mutual cooperation among neighbouring countries to combat illegal trafficking of wildlife parts and derivatives was strengthened through the transboundary meetings and visits of the representatives from China and India. Three member Chinese official delegates headed by Mr. Chen Jianwei, the Standing Deputy Director General of the Endangered Species Import and Export, Management Office of The People's Republic of China visited Nepal in October 2008. The delegation met Minister of Forests and Soil Conservation and other high level Nepalese government officials and discussed the issue shared by China and Nepal. The CITES Management Authority signed a minute, which opened the avenue for future actions at trans-border areas of the countries. Similarly, local level trans-border meetings between India and Nepal were organized in Pilibhit, India and Beldandi, Nepal as well as in between Nepal and Tibet Autonomous Region China in Rasuwagadhi, Nepal.



© Diwakar Chapagain

Confiscated wildlife parts

# Providing Sustainable Livelihoods Alternatives

WWF works together with its partners to develop innovative approaches to conservation that provide local communities with opportunities of sustainable livelihood alternative. WWF's approach underscores the importance of addressing people's livelihood needs and responding to people's strengths and constraints in order to sustain conservation achievements. Our efforts are aimed at motivating community participation in conservation through maximizing opportunity, benefits to communities from natural resources, livelihoods improvement activities and capacity building. Though addressing the livelihoods issues have remained to be one of the major challenge within conservation framework, WWF continued to prioritize and integrate conservation and livelihoods issues as both issues are closely interlinked.



© Gautam Poudya/WWF Nepal

Camomile plantation

## **Institutionalizing the livelihoods and governance change monitoring process**

With the aim to institutionalize livelihoods change monitoring skills in KCA, capacity building training was held in February 2009 for the Kanchenjunga Conservation Area Management Council Member (KCAMC), social mobilizers of KCAP and KCA User Committee. The training will enable the KCAMC and User Committee members and project staff to realize the change in people's livelihoods, resource, strategy, issues and environment including social role through implementation of conservation and development activities.

## **Documenting the lessons learned**

A documentary entailing WWF Nepal's livelihood initiatives and its linkages with conservation was developed and disseminated to audience at different levels. The documentary provides a complete picture of WWF Nepal's livelihood works, its defined target audiences, process to reach them, implementation procedures, observed challenges and view of community and institutional representatives of two landscapes in Nepal – Sacred Himalayan Landscape and Terai Arc Landscape.

## **Population Health and Environment – PHE Project**

The Population, Health and Environment Project (PHE) being implemented in Khata corridor in TAL since last two years has been replicated in Basanta and Gadhma/Lamahi based on the best learning and practices with community's recommendation and illustration. The project aims to address reproductive and environmental health issues of community living in bottleneck and corridor of defined

## “WWF continued to prioritize and integrate conservation and livelihoods issues as both issues are closely interlinked.”

areas and improve people’s livelihoods. The positive changes in people’s well-being after the project intervention include – installation of alternative energy devices; child and infant care centre; reduction in frequency of acute respiratory infection (ARI), diarrhea and water-borne diseases; changes in role of women involved in intra household work; increased access to quality of reproductive and environmental health services at their desired places; increasing number of contraceptive users; enhancement of contraceptive distribution mechanism through CFUG managed distribution system. These initiatives in addition to having long term positive impact to people’s health and environment will also have positive impacts to reduce human pressure on biodiversity.

### Feasibility study to build Northern Mountain Landscape

WWF Nepal has more than ten years long working and learning experience on site specific conservation and development programs in Shey Phoksundo National Park and Buffer Zone area (SPNPBZ), and for almost three years in Dhorpatan Hunting Reserve (DHR).

A pre-feasibility assessment study was conducted in SPNPBZ and DHR to identify the major areas of intervention for biodiversity conservation and livelihoods enhancement in the Northern Mountain Landscape. From the biodiversity perspective, the landscape harbors snow leopard, blue sheep, musk deer and red panda. Similarly, the landscape is rich in NTFP albeit unsustainable and poorly regulated harvest of species like Yarcha Gumba (*Cordyceps sinensis*). The modes of rural livelihoods are entirely dependent upon the forest and pastureland. The major threats to conservation are encroachment, forest fire, poaching and retaliatory killing and over grazing.

### Livelihoods Improvement Plan (LIP) implementation guideline for Langtang

A field based practical implementation guiding document for Buffer Zone User Committee to implement the issues and targets defined in LIP was developed and distributed. An orientation program was conducted to enhance user committee’s skills to integrate identified livelihoods issues, its priority together with governance in the forest and buffer zone operation plans. The document, “Livelihoods Improvement Plan Implementation Guideline” is a living reference document not only to Langtang National Park and Buffer zone Users Committee where it was prepared but it will also benefit other user committees involved in conserving natural resources. It is intended to maximize the resource based benefits to marginalized and excluded community within other parts of the Sacred Himalayan Landscape Nepal.



© Gautam Paudyal/WWF Nepal



# Communicating Conservation

WWF communicates the conservation issues and stories through all forms of media to influence the attitudes of people towards conservation and to engage and encourage their participation in biodiversity conservation and sustainable development.

WWF Nepal produces newsletters and regularly updates its website, airs radio programs, television programs, and celebrates significant environment and conservation days with partner organizations - all to increase the awareness on and support for conservation issues.

The WWF Nepal website [www.wwfnepal.org](http://www.wwfnepal.org) is a one-window source of availing information about WWF Nepal and its activities. The WWF Resource Centre houses a plethora of research reports and publications catering to the needs of researchers, academicians and students.

## Climate change message from the top of the world

The WWF message – “Stop Climate Change, Let the Himalayas Live!” was carried to the top of the world by Mr. Apa Sherpa on his record 19th summit of Everest in May 2009, reminding the world of its responsibility towards preserving this global heritage.

The event was a part of the Climate for Life campaign being led by WWF Nepal to raise awareness on climate change impacts in the Himalayas. The campaign was launched with the aim to raise the profile of the Himalayas in the global climate debate with multiple events throughout the year 2009 highlighting the issues at stake - culminating into a concerted effort at COP15 Meeting in Copenhagen in December 2009.

Beat-the-GLOF Action Run was another successful event organized as part of WWF’s Climate for Life campaign. The Sherpa communities in the Khumbu region organized the Beat-the-GLOF Action Run on 18 June 2009 in their desperation to bring attention to the imminent dangers of the Imja Lake Outburst on their way of life and indeed, their existence. The event was organized by Sherwi Yondhen Tshokpa (a Sherpa students’ group) and iDEAS, with sponsorship from The North Face.

The campaign’s official website [www.climate4life.org](http://www.climate4life.org) was launched along with the campaign and it features all the relevant and remarkable information about the events and activities under the campaign. The campaign is featured in the social networking sites – Facebook, Twitter, Youtube and Flickr.



## “The WWF message – “Stop Climate Change, Let the Himalayas Live!” was carried to the top of the world by Mr. Apa Sherpa on his record 19th summit of Everest in May 2009.”

### Khumbu Festival

On 19 June 2009, the day after the Beat-the-GLOF Action Run, Khumbu Festival was held in Khumjung village to focus on the mountain communities culture, heritage, and their crucial role in maintaining and protecting their mountain environment.

WWF Nepal conducted various programs for local communities at the Festival in Khumjung, a village in the Everest region, to raise awareness on the threats of GLOF. The Sherwi Yondhen Tshokpa, a Sherpa students group, in coordination with youth clubs, social service units, and the local residents organized the Festival in which the communities showed their solidarity in taking action to tackle the impacts of Climate Change. National and international institutions and organizations participated and shared their studies with the communities, and collaboratively formulated realistic plans of action.

The WWF childrens’ book series “Pani Prasad” in Nepali was launched at the program, which became an instant hit with adults and children alike. The Pani Prasad mascot also circulated the Festival, amidst cheers from the crowd. In addition, interactive session were conducted with the local students including documentaries, quizzes, dramas and presentations derived from the Pani Prasad books to highlight the issue of climate change especially in the high-altitude wetlands.



© WWF Nepal

### Extinction Sucks filmed in Chitwan

The final episode of the six part series called “Extinction Sucks” was filmed in Chitwan in October focusing on the conservation of the endangered Greater one-horned rhinoceros. The television series is being produced by Off The Fence (an Amsterdam-based wildlife filmmaker with a long track record) for Babelgum, a new on-line video platform <http://www.babelgum.com/>. The six part series will also be aired on Animal Planet and other channels. During transmission on Babelgum visitors to [www.panda.org](http://www.panda.org) will also be able to watch the series.



© WWF Nepal

Filming of Extinction Sucks in Chitwan

### Journalists’ training and field visit

A two days training was organized in Bardia on 23-24 October 2008 for 25 local journalists on reporting of conservation issues. The journalists were oriented on communicating conservation issues, current conservation practices and technical terminologies while reporting the conservation issues. Similarly, a field trip to KCA for journalists was organized and stories from KCA were shared widely in the media.

# Conservation Education

Conservation education is an integral part of all the projects and programs at WWF Nepal. At local level, WWF, together with various partners, has initiated and promoted awareness and capacity building programs among local people to conserve Nepal's biological diversity in a way that is ecologically viable, economically beneficial, and socially equitable. The conservation education program is designed for school children, teachers, community members, and other target groups to enhance their decision-making capacities for conservation and sustainable development.



© WWF Nepal

## Eco Summit 2009

Eco Summit 2009 was organized at Sauraha, Chitwan on 22-23 May on the occasion of the International Biodiversity Day. The summit was jointly organized by WWF in association with SENSE Nepal, Environment Conservation Teacher Forum, Environment Conservation Teacher Society, Chitwan and Eco Club Network, Nawalparasi. Almost 700 participants including students and teachers from more than 400 Eco Clubs from 18 districts of Nepal participated in the summit.

The summit was organized to strengthen relationship with the youth, create a forum to share knowledge and experiences among youths gathered from different places and eventually form a functional youth group dedicated towards conservation.

## Forging the Eco Club networks

A national network of Eco Clubs, School Environment Conservation Education Network, Nepal (SENSE-Nepal), was formed on 19 June 2009. Primarily the SENSE-Nepal represents 195 Eco Clubs of Terai Arc Landscape Nepal. The SENSE-Nepal aims to include all Eco Clubs across Nepal in future.

## Signatures for tiger and rhino conservation presented to the President

A 601 metres long cloth bearing 126,229 signatures for tiger and rhino conservation was presented to the President of Nepal, His Excellency Dr. Ram Baran Yadav by students, teachers, Eco Club members and WWF representatives on 2 December 2008.

## “The national network of Eco Clubs - SENSE Nepal formed with WWF’s support represents 195 Eco Clubs of TAL Nepal.”

The Shuklaphanta Eco Club Network (SEN) with WWF’s support had organized a weeklong Tiger Rhino Conservation Signature Campaign in the Terai Arc Landscape Nepal and within a week the signatures were collected by the students and teachers of Eco Clubs affiliated to SEN.

The campaign aimed at generating awareness on tiger and rhino conservation at local level in TAL Nepal and gathering support and commitment in conserving these endangered species. The campaign started by seeking commitment from Prime Minister Pushpa Kamal Dahal “Prachanda”.

### iEducate

iEducate is a unique and innovative platform through which conservation message is disseminated to school children and members of Eco Clubs effectively. It is an inventive mix of presentations, games and quizzes which are presented in a child-friendly and interactive style to impart basic knowledge of conservation to young children in a way they can relate to. Furthermore, in the process of teaching others about conservation, the presenters, whether WWF staff or visitors, educate themselves.

Altogether 10 iEducate sessions were organized this year in various schools of Kathmandu valley and two schools of Shankhuwasaba district. Regular staffs and interns of WWF contributed their time to facilitate iEducate sessions. Altogether 407 students benefited from the iEducate.

### Scholarships

To honor the lives and contributions of our prominent conservation leaders, who we lost in the tragic helicopter accident in Ghunsa, Taplejung in September 2006, WWF has established a Memorial Scholarship Fund with an aim to assist diligent and needy students to pursue careers in conservation and to make an effort towards creating future conservation leaders. As part of this effort, WWF has been providing various scholarships to meritorious and deserving Nepali students in the field of environment, biodiversity conservation and other related disciplines. This year, WWF provided scholarships to eight deserving students (four females and four males) to pursue certificate level, bachelors level and masters level studies in the environment and biodiversity conservation related discipline.



## Transforming business

### Top young Nepali CEOs take lessons in sustainability

One Planet Leader, the Applied Sustainability Masterclass for young Nepali CEOs was organized by WWF in association with Entrepreneurs' Organization Nepal Chapter (EO Nepal) and Confederation of Nepalese Industries Young Entrepreneurs' Forum (CNI-YEF) on 2 April 2009. The Masterclass aimed at helping companies on their journey towards a sustainable future, and was part of the Sustainability Week organized by WWF Nepal in April 2009.

The Sustainability Week focused on finding collaborative ways between the private and other sectors in Nepal leading towards a sustainable approach for the country. Activities included the biggest Nepali Corporate House, Chaudhary Group publicly declaring their vision to become the first Green Company in the country and the Nepal Tourism Board signing an MoU with WWF to promote responsible tourism standards in Nepal.



# WWF's International and Regional Programs

## The Network Initiatives

### Living Himalayas WWF's Global Initiatives

WWF's work in Nepal is part of Living Himalayas – WWF's Global Initiative, which aims to bring the three governments of Bhutan, India and Nepal together to effectively manage and conserve the natural resources in the face of Climate Change for the sake of their unique people, their exceptional wildlife and their breathtaking environment. Combining connectivity and regional solutions, the initiative views the ecoregion as a single unit and not a series of fragmented landscapes in separate countries. Wildlife trade, landscape management and development issues will be treated regionally, bringing people, government and industry together in the three countries and developing plans that straddle borders and landscapes.

### Vision

A harmonious mosaic of healthy, vibrant landscapes providing plentiful resources for people while giving wildlife space and securing the ecological and cultural treasures of the Himalayas.

### Goals

By 2020:

- Ecosystem integrity and climate resilience of critical freshwater systems in the Eastern Himalayas are secured in the context of hydropower development.
- Ecosystem contiguity and ecological connectivity of the Living Himalayas secured in a mosaic of ~5 million hectares of high conservation value forests, grasslands and wetlands.
- Populations of iconic and threatened species thrive in the Eastern Himalayas.

## Tiger Network Initiative

The tiger is iconic of Asia's natural heritage and ecological integrity, and has wide cultural esteem. Unfortunately, due to extensive habitat loss and intensive poaching for their body parts, tiger populations across the range have shrunk alarmingly over the past five decades. Today tigers occupy a mere 7% of their historic range.

WWF, recognizing that a wider paradigm shift is required if Asia's top predator is to survive the next decade and beyond, is working to protect the tiger through its ambitious network-wide Tiger Initiative. The Tiger NI team proposes a bold plan to galvanize political will and take action to double the number of wild tigers by the year 2020, focusing on 13 tiger landscapes.

### Vision

Tigers will thrive in viable wild populations in priority landscapes, and in restored, interconnected habitats, secure from threats to their survival and coexisting with local communities.

### Goal

The wild tiger population increase to at least 6,000 by 2020, through conservation in 13 priority landscapes.

### Its action plan

WWF's Tiger NI is dedicated to developing and applying this shift by focusing on key, strategic areas - places and policy - to recover wild tiger populations over the next decade.

The Tiger NI includes WWF offices in 11 tiger range countries; namely India, Nepal, Bhutan, China, Thailand, Malaysia, Laos, Vietnam, Cambodia, Indonesia, and Russia.

## Asian Rhino and Elephant Action Strategy

Asian elephants and all four Asian rhino species are amongst the most endangered large mammals in the world and their numbers are falling at some of the critical bio diversity sites. WWF is doing its best to halt this trend and initiated a suite of conservation activities for these important species under a comprehensive program dubbed AREAS (Asian Rhino and Elephant Action Strategy) and based the regional HQ in WWF Nepal Program since the year 2000. The overall objective is that the WWF AREAS program is instrumental in achieving conservation results through interventions by WWF and interventions of partner organizations (Governments, NGOs, and other stakeholders) so that Asian elephant and rhino populations are viable in adequate habitats in 2020. It will do so by enhancing institutional capacity of WWF and partners through technical and policy support to contribute to the survival of viable populations of Asian Elephants, Greater One-horned, Sumatran and Javan Rhinos in the wild. The program will also monitor at the regional level to measure the impact of WWF investments for the conservation of these four species of Asian pachyderms. In Nepal, the AREAS programme has been working closely with WWF and its partner organisations in developing and implementing the conservation Action Plans for rhinos and elephants. In this reporting period the program has provided support to initiate an ID based monitoring of rhinos, radio tracking of rhinos to look at the impact of invasive weeds in their habitat and to implement best practices for the treatment of tuberculosis in captive elephants used by the DNPWC and the tourist industry. In addition, the program works closely with WWF Nepal staff on the issue of combating illegal trade in rhino and elephant parts.

## Critical Ecosystem Partnership Fund

Investing in Capacity –building for Conservation  
USD 165,341 awarded to researchers and NGOs in Nepal in 2009.

The Critical Ecosystem Partnership Fund (CEPF) is a global program that provides grants to non governmental organizations and other private sector partners to protect critical ecosystem all over the world. The fund is a joint programme of Conservation International, l'Agence Francaise de Developpement, the Global Environment Facility, the Gouvernement of Japan, The John D. and Catherine T. MacArthur Foundation, and the World Bank.

In the Eastern Himalayas, WWF leads the regional team responsible for facilitating, coordinating and monitoring grants for CEPF-supported projects in Nepal, Bhutan and northeast India.

In Nepal, WWF coordinates the CEPF Grants. This year, three NGOs received a total of USD 90,255 in large grants for projects in the Makalu Barun Area, Kangchenjunga-Singalila Complex and Terai Arc Landscape, for one and half year duration. Project that are supported by the grants aim at the conservation of red panda, promote red panda based community tourism and secure safe environment for critically endangered vultures.

The WWF Nepal Program office hosts the CEPF regional team for the Eastern Himalayas. The team currently coordinates seven large grants in Bhutan that have received a total USD 634,000, six large grants in northeast India which have been awarded over USD 500,000 in total and twelve large grants in Nepal that have received a total USD 624,255. The team also coordinates over 55 small grants in Bhutan, India and Nepal.

This year, twenty-six proposals were received as applications for small grants, and a total of USD 75,086 has been awarded for ten research projects. Grants were given towards:

- conserving amphibians in key sites of Kangchenjunga - Singalila Complex in Eastern Nepal
- assessing the status of fish diversity in Tamor River and its major tributaries in Eastern, Nepal
- preparing recommendations for updating the protected animal list for Government of Nepal
- assessing biodiversity of Koshi Tappu Wildlife Reserve after Koshi Flood Disaster 2008
- enhancing capacity of Nature Guides: Building a Conservation Force in Chitwan National Park
- assessing indigenous peoples' perception on climate change impacts on floral and faunal species in the Kangchenjunga - Singalila Complex, in Eastern Nepal
- developing sustainable harvesting and community-based monitoring systems for threatened medicinal plants of Kangchenjunga-Singalila Mountain Complex, in Eastern Nepal
- assessing tiger ecology across churia range in Chitwan National Park
- publishing a book on Lepidoptera of Nepal
- establishing diclofenac free zone for vulture conservation in Eastern Nepal

The first round, five following core grants projects were initiated in April 2007 and ended in March 2009

1. Ethnobotanical Society of Nepal (ESON)
2. Ilam Cooperation Council (ICC)
3. Namsaling Community Development Center (NCDC)
4. Bird Conservation Nepal (BCN)
5. Environmental Camps for Conservation Awareness (ECCA)

More information on all grants is available at [www.panda.org/easternhimalayas/cepf](http://www.panda.org/easternhimalayas/cepf)





# Financial Overview: Expenditure

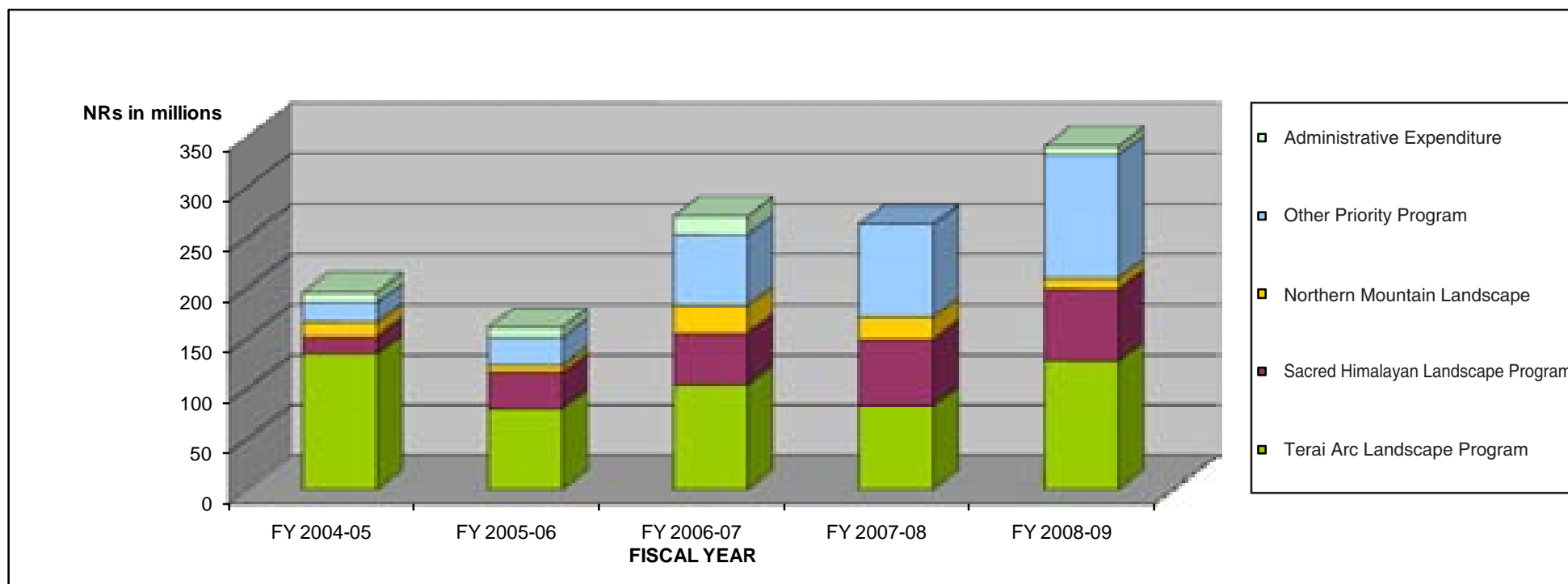
WWF NEPAL Audited Financial Overview

For Fiscal Year 2004/05 - 2008/09

Figures in NRs

Particulars	Total amount FY 2004-05	Total amount FY 2005-06	Total amount FY 2006-07	Total amount FY 2007-08	Total amount FY 2008-09
(1) TERAI ARC LANDSCAPE PROGRAM	134,605,465	80,095,870	103,915,144	82,577,019	127,741,435
(2) SACRED HIMALAYAN LANDSCAPE PROGRAM	16,843,313	35,768,187	51,093,390	66,331,101	71,091,329
(3) NORTHERN MOUNTAIN LANDSCAPE	13,937,434	7,127,246	27,132,605	21,863,255	9,920,795
(4) OTHER PRIORITY PROGRAM	19,642,577	27,780,443	70,631,330	92,385,983	123,257,952
(5) ADMINISTRATIVE EXPENDITURE	10,499,923	9,366,330	18,470,716	*-809,388.84	8,262,798
<b>TOTAL EXPENDITURE (1+2+3+4+5)</b>	<b>195,528,712</b>	<b>160,138,076</b>	<b>271,243,186</b>	<b>262,347,968</b>	<b>340,274,309</b>

\* Excluding Head Quarter Expense



# Highlights of 2008-2009

July 2008

## Support to partners

To strengthen the institutional capacity of Metropolitan Police Crime Division (MPCD) a set of equipments and motorbikes were handed over to Superintendent of Police, Mr. Devendra Subedi by Mr. Anil Manandhar, Country Representative, WWF Nepal on 7 July.

Mr. Anil Manandhar, Country Representative of WWF Nepal handed over a jeep and three motorbikes to honorable Minister for Forests and Soil Conservation Mr. Matrika Yadav at Department of Forest (DoF) on 11 July to strengthen its capacity in effective law enforcement in the Terai districts to control poaching and illegal trade activities.

Partnership with Kathmandu University  
WWF Nepal established a partnership with Aquatic Ecology Centre (AEC), Kathmandu University in April 2008. AEC, with WWF's support is conducting a detail research in the high altitude wetland Gokyo (Ramsar site) in Everest region regarding the impact of climate change on freshwater.

October 2008

## Mai Pokhari designated as Ramsar site

Mai Pokhari, a mid-hill wetland of religious significance in eastern Ilam district of Nepal was declared a Ramsar site on 28 October during the 10th Conference of Parties to the Ramsar Convention (COP10) at Changwon, the Republic of Korea. With the declaration, Nepal now has nine wetlands listed as wetlands of international significance.

December 2008

## Signatures for tiger and rhino conservation presented to the President

A 601 meters long cloth bearing 126,229 signatures for tiger and rhino conservation was presented to the President of Nepal, His Excellency Dr. Ram Baran Yadav by students, teachers, Eco Club and WWF representatives on 2 December 2008.

## Scope of Cooperation signed for Koshi River Basin Management between Water and Energy Commission Secretariat (WECS) and WWF Nepal

The Scope of Cooperation (SOC) between Water and Energy Commission Secretariat (WECS), the government apex body for water resources and WWF Nepal was signed on 5 December 2008 in the presence of the Secretary, WECS. WWF Nepal has diversified its government partnership with WECS to pilot Koshi River Basin Management (KRBM) implementing Integrated River Basin Management (IRBM) approach as emphasized by the National Water Plan 2005. The SOC envisions a five year programmatic scoping of 3.1 million USD to work on Koshi basin.

July Aug Sep Oct Nov Dec

August 2008

## Grant agreement with the DoF and DNPWC

WWF signed grant agreements with Department of Forests (DoF) and Department of National Parks and Wildlife Conservation (DNPWC) on 4 August. Dr. Keshav Raj Kanel, Director General - DoF, Dr. Annapurna Nanda Das, Director General - DNPWC, and Mr. Anil Manandhar, Country Representative - WWF Nepal signed the agreements. The total grant amount was of NRs. 41,046,894.

September 2008

## 23 September declared National Conservation Day

Honorable Minister for Forests and Soil Conservation Mr. Kiran Gurung declared 23 September as "National Conservation Day" during a program jointly organized by conservation consortium members comprising of WWF Nepal, Bird Conservation Nepal, Environmental Camps for Conservation Awareness, The International Centre for Integrated Mountain Development, IUCN – The World Conservation Union, Nepal Forum of Environmental Journalists, National Trust for Nature Conservation, Wildlife Conservation Nepal, The Mountain Institute and Wildlife Watch Group. He also launched "Conservation Heroes: Their Legacy Lives On" and four other books on conservation at the program.

The Abraham Conservation Awards, Matthew Preece and Yeshe Lama Young Conservation Leader Award and WWF Media in Conservation Award were awarded to individuals and organizations in recognition of their contribution to conservation. The Nepal Conservation Memorial Scholarships and Mingma Sherpa Memorial Scholarships were awarded to three meritorious students on the occasion.

## WWF felicitated by Dolpo people

The people of Dolpo felicitated WWF Nepal for its work in the region amidst the gathering of Constituent Assembly members representing the Karnali region and local leaders in the presence of then Prime Minister Pushpa Kamal Dahal "Prachanda".



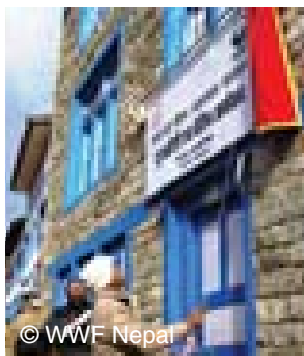
© WWF Nepal

Constituent Assembly members of the thematic committee on Resources, Economic Power and Revenue Sharing, vis

January 2009

**First field piloting of National Water Plan in Nepal**

The first field piloting of National Water Plan (NWP) was initiated with an official inauguration of Dudhkoshi Sub Basin Project Office by Mr. Kishor Thapa, Secretary of Water and Energy Commission Secretariat (WECS), the government apex body for water resources and WWF Country Representative to Nepal, Mr. Anil Manandhar on 5 January 2009 in Salleri of Eastern Nepal.



© WWF Nepal

May 2009

**Apa takes WWF's climate change message to the top of the world**

World record mountaineer Apa Sherpa reached the top of the Mt. Everest on 21 May 2009 for the record 19th time and placed a WWF banner urging the world to take action against climate change.

The banner which he brought to the top of the world at around 0800 local time called to "Stop Climate Change - Let the Himalayas Live!"

**Towards a greener future**

The third national Eco Summit was jointly organized by WWF, Environment Conservation Teacher Forum, School Environment Conservation Education Network, Nepal (SENSE-Nepal), Environment Conservation Teacher Society and Eco Club Network Nawalparasi during 22 – 23 May 2009 in Chitwan. The Eco summit saw the convergence of more than 700 students and teachers from 18 districts of Nepal.



© WWF Nepal

Jan

Feb

Mar

Apr

May

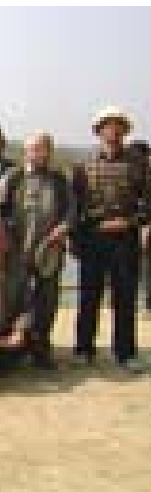
June

February 2009

**WWF Nepal Nominated to Participate in the Constitution Making Process**

Marking months of advocacy efforts in its drive for a pro-environment constitution, WWF Nepal organized a field trip for a team of 18 high-profile Constituent Assembly (CA) Members of thematic committee to Chitwan National Park and Buffer Zone in February. In the landmark visit, the participating CA members, all part of the CA Committee for Natural Resources, Economic Power and Revenue Sharing, gained first hand information about conservation efforts, issues and successes through on-the-ground observations and interactions with the local communities; presentations from the Chief Warden of CNP, Country Representative and other senior staff of WWF Nepal and other experts on the various facets of biodiversity conservation, natural resource management and its linkage with economic development in Nepal. The discussions and interactions that followed included ways to address and incorporate these diverse issues into the new Constitution of Nepal.

Following the field trip, the constitutional committee on Natural Resources, Economic Power and Revenue Sharing appointed WWF Nepal as a member of the technical committee starting February 2009. WWF Nepal is now a part of constitution making process as it has been nominated as the technical committee member by one of the 10 constitutional committees formed to draft a concept paper and draft clauses for the new constitution. This is one of the most remarkable achievements of the year.



Committee for Natural Resources, Chitwan

April 2009

**Top young Nepali CEOs take lessons in sustainability**

One Planet Leader, the Applied Sustainability Masterclass for young Nepali CEOs was organized by WWF in association with Entrepreneurs' Organization Nepal Chapter (EO Nepal) and Confederation of Nepalese Industries Young Entrepreneurs' Forum (CNI-YEF) on 2 April 2009

**Climate for Life campaign launched**

Mr. Apa Sherpa set off to climb Mount Everest for a record 19th time to take an anti-climate change message to the world's highest peak on 6 April 2009. He carried a WWF banner with the message "Stop Climate Change - Let the Himalayas Live!" and a metal vase containing 400 Buddhist offerings up to the 8,848 metres high summit. The expedition also marked the start of WWF's global communications campaign - Climate for Life campaign.

June 2009

**Himalayan youth run to combat climate change**

In their desperation to bring attention to the imminent dangers of the Imja Lake Outburst on their way of life and indeed, their existence, the Sherpa communities in the Khumbu region organized the Beat-the-GLOF Action Run on 18 June 2009. The event was part of WWF's Climate for Life campaign to raise global awareness on the impacts of Climate Change in the Himalayas. The event was organized by Sherwi Yondhen Tshokpa (a Sherpa students' group) and iDEAS, with sponsorship from The North Face.

**Radio tagging to save the gharials**

Fourteen gharials fitted with radio tags were released into the Rapti River on 8 February by the DNPWC in collaboration with WWF Nepal, to track the movement of this critically endangered species. The tracking is expected to help assess the reptile's survival rate and the status of its preferred habitat in Nepal.

# Acknowledgements

WWF Nepal acknowledges with gratitude the support received from the following partners, donors and supporters:

Government of Nepal; National Planning Commission (NPC); Ministry of Finance (MOF); Ministry of Forests and Soil Conservation (MOFSC); Ministry of Environment (then Ministry of Environment; Science and Technology - MOEST); Water and Energy Commission Secretariat (WECS); Social Welfare Council (SWC); Ministry of Culture, Tourism and Civil Aviation (MOCTCA); Ministry of Agriculture and Cooperative; Department of National Parks and Wildlife Conservation (DNPWC); Department of Forests (DOF); Department of Plant Resources (DPR); Department of Forest Research and Survey, Department of Soil Conservation and Watershed Management (DSCWM); Department of Hydrology and Meteorology (DHM); Nepal Tourism Board (NTB); Alternative Energy Promotion Center (AEPC).

Ministry of Foreign Affairs-Finland; The British Embassy; Embassy of the United States; The Embassy of Finland; Royal Netherlands Embassy (New Delhi); United Nations Environment Programme (UNEP); US Agency for International Development (USAID); Department for International Development (DFID); The World Bank, European Commission (EC); UK-Department of Environment, Food and Rural Affairs-Darwin Initiative; US Fish and Wildlife Services (USFWS); The Macarthur Foundation; The Ford Foundation; Save the Tiger Fund

(STF); Johnson & Johnson; University of Missouri; University of Zurich; Kadoorie Agricultural Aid Association (KAAA); Kadoorie Charitable Fund; Chaudhary Group of Companies and SOS Crocodile.

WWF US; WWF UK; WWF Finland; WWF International; WWF Netherlands; WWF New Zealand; WWF France; WWF Germany; WWF Sweden; WWF Australia; WWF Asian Rhinos and Elephant Action Strategy; WWF's Living Himalayas Network Initiative and WWF's Tiger Network Initiative; WWF China; WWF Indonesia; WWF South Pacific; WWF India and Ms. Nancy Abraham.

International Centre for Integrated Mountain Development (ICIMOD); The World Conservation Union Nepal (IUCN), CARE Nepal; The Mountain Institute (TMI); Practical Action, Nepal; Winrock International; International Water Management Institute (IWMI); ECO Himal; International Trust for Tiger Conservation (ITNC).

National Trust for Nature Conservation (NTNC); Nepal Army; Nepal Police; Wildlife Conservation Nepal; Federation of Community Forestry Users, Nepal (FECOFUN); Society of Hydrology and Meteorology - Nepal (SOHAM); Dolphin Conservation Society; Environmental Camps for Conservation Awareness (ECCA); Nepal Forum for Environmental Journalists (NEFEJ); Society of Environmental Journalists (SEJ); Clean Energy Nepal (CEN); Pro Public; Biogas Sector Partnership Nepal

(BSP); Tribhuvan University (TU); Kathmandu University; Institute of Forestry, Himalayan Amchi Association (HAA); Nepalnature.com; Wildlife Watch Group; Bird Conservation Nepal; National Environmental Coalition of Indigenous Nationalities (NECIN); Ethnobotanical Society of Nepal (ESON).

WWF Nepal would like to express special thanks to: Community Based Organizations; Nepali Media Houses; Community Forest Coordination Committees; Community Forest User Groups, Buffer Zone User Group; Buffer Zone User Committees; Buffer Zone Management Committees; Eco Club Networks; Eco Clubs; Ghodaghodi Area Conservation and Awareness Forum; Kangchenjunga Conservation Area Management Council; Nepal Red Cross Society; Mother Groups; Youth Clubs; District Development Committees (DDCs); Village Development Committees (VDCs); Women Awareness Groups and local communities all over Nepal.

# WWF Offices

WWF is an independent foundation registered under Swiss law, governed by a Board of Trustees under an International President.

## WWF HAS OFFICES IN:

AUSTRALIA, AUSTRIA, BELGIUM, BHUTAN, BOLIVIA, BRAZIL, CANADA, CAUCASUS, CENTRAL AFRICA, CENTRAL AMERICA, CHINA, COLOMBIA, DANUBE/CARPATHIAN, DENMARK, EASTERN AFRICA, EUROPEAN POLICY - Belgium, FINLAND, GERMANY, GREECE, HONGKONG, HUNGARY, INDIA, INDOCHINA, INDONESIA, ITALY, JAPAN, MACROECONOMICS FOR SUSTAINABLE DEVELOPMENT - USA, MADAGASCAR AND WEST INDIA OCEAN, MALAYSIA, MEDITERRANEAN, MEXICO, MONGOLIA, NEPAL, NETHERLANDS, NEW ZEALAND, NORWAY, PAKISTAN, PERU, PHILIPPINES, POLAND, RUSSIA, SOUTH AFRICA, SOUTHERN AFRICA, SOUTH PACIFIC, SPAIN, SWEDEN, TANZANIA, THAILAND, TURKEY, UNITED KINGDOM, UNITED STATES OF AMERICA, WESTERN AFRICA

## ASSOCIATES:

ARGENTINA FUNDACION VIDA SILVESTRE, NIGERIA NIGERIAN CONSERVATION FOUNDATION, VENEZUELA FUDENA

Design concepts and text edits by  
Neelima Shrestha  
Senior Officer - Business Development and Donor Relations

Printing:  
Water Communication

© WWF Nepal

Cover Photo - Snow Leopard (*Panthera uncia*), © Martin Harvey/WWF-Canon

Back Cover Photo - Mr. Apa Sherpa on his record 19th summit of Mt. Everest, © Climate for Life/WWF Nepal

**WWF International**  
**Avenue du Mont-Blanc**  
**1196 Gland, Switzerland**  
**Tel: +41 22 364 9111**  
**Fax: +41 22 364 8836**  
**Website: [www.panda.org](http://www.panda.org)**

## WWF's Mission

To stop the degradation of the planet's natural environment and to build a future in which humans live in harmony with nature, by:

- Conserving the world's biological diversity
- Ensuring that the use of renewable natural resources is sustainable
- Promoting the reduction of pollution and wasteful consumption

WWF is one of the world's largest and most experienced independent conservation organizations, with almost 5 million supporters and a global network active in more than 100 countries.



*for a living planet*<sup>®</sup>

WWF, The Global Conservation Organization  
Nepal Program Office  
P.O. Box 7660  
Baluwatar, Kathmandu, Nepal  
Tel: 977 1 4434820  
Fax: 977 1 4438458  
Email : [info@wwfnepal.org](mailto:info@wwfnepal.org)  
Website : [www.wwfnepal.org](http://www.wwfnepal.org)