



Evian mineral water

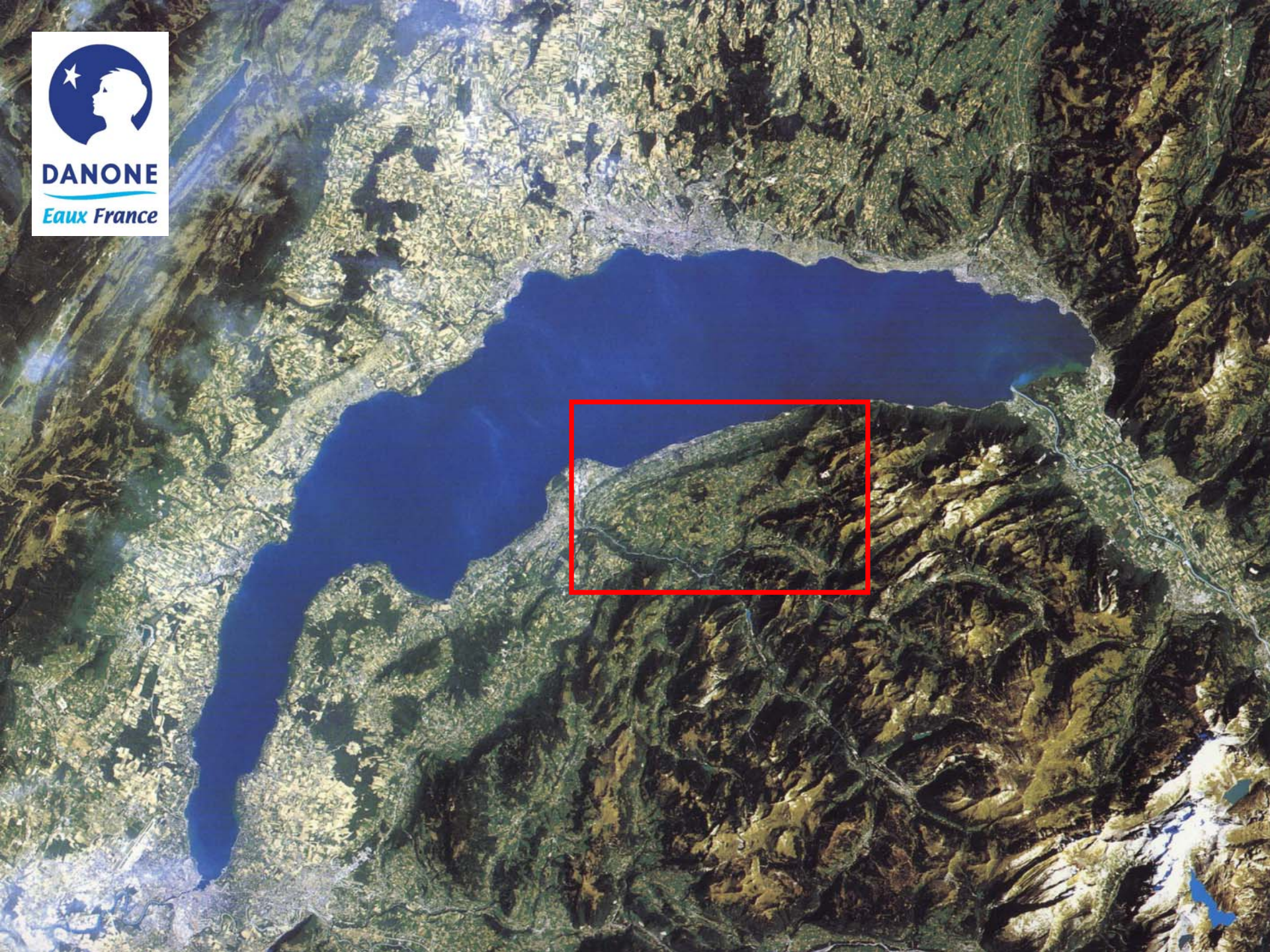
Water resources

protection policy :

A 15 years experience in PES



Environment and Water Resources Department



Evian-les-bains

Nord

SPRING AREA

CATCHMENT AREA



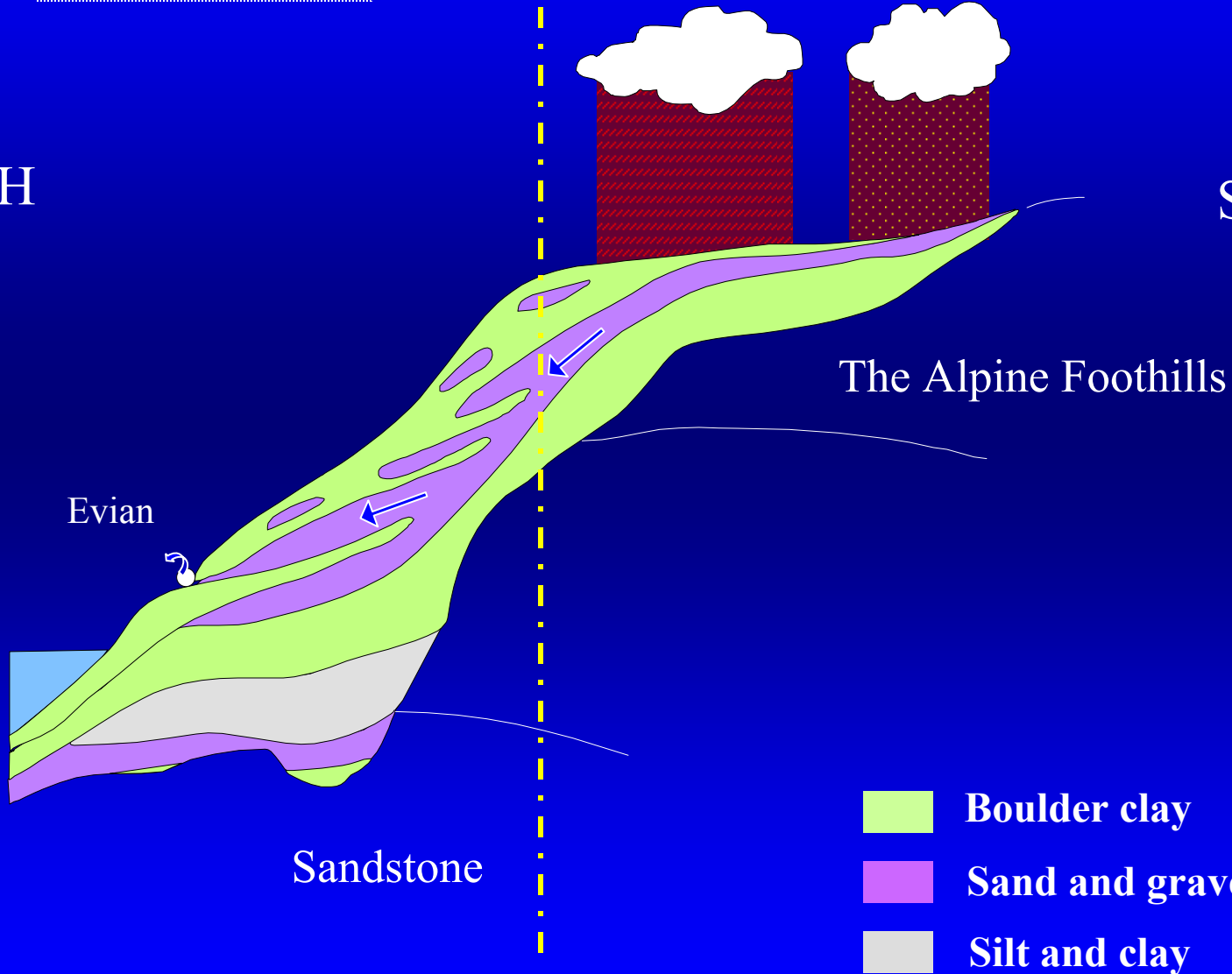


Spring area

Catchment area

NORTH
A

SOUTH
A'



Sandstone

- Boulder clay
- Sand and gravel
- Silt and clay



The length of filtration in various rocks induces :

- a specific equilibrated composition
- a perfect stability (flowrate, composition, temperature)
- an exceptional purity (no traces of organics, mineral or biological contaminants)





PROTECTION POLICY



Evian-les-bains

Nord

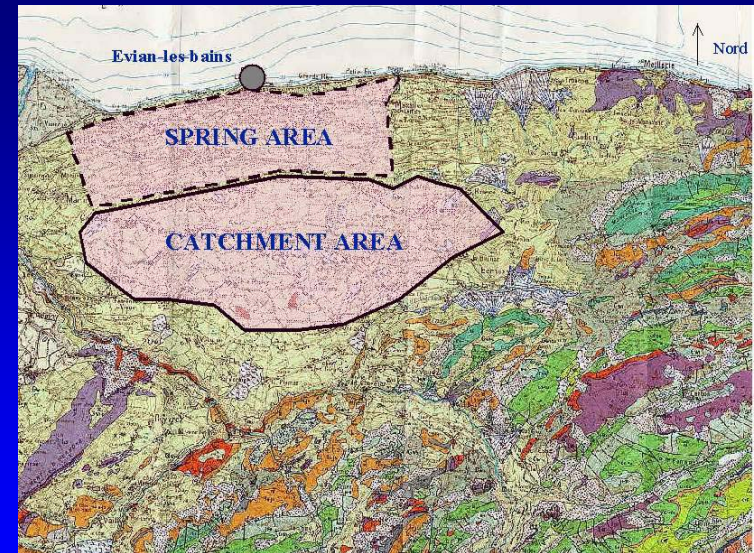
SPRING AREA

CATCHMENT AREA



SPRING AREA

- Spreading over 16 km²
- French regulation measures (DIP)
- Measures against :
 - Unauthorized drilling
 - Polluting activities



Evian-les-bains

Nord

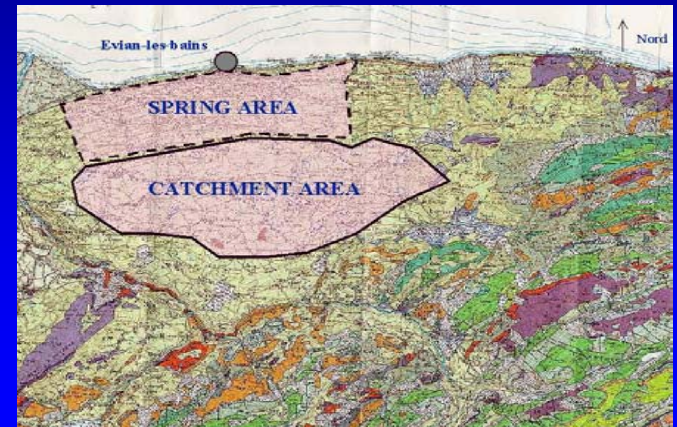
SPRING AREA

CATCHMENT AREA

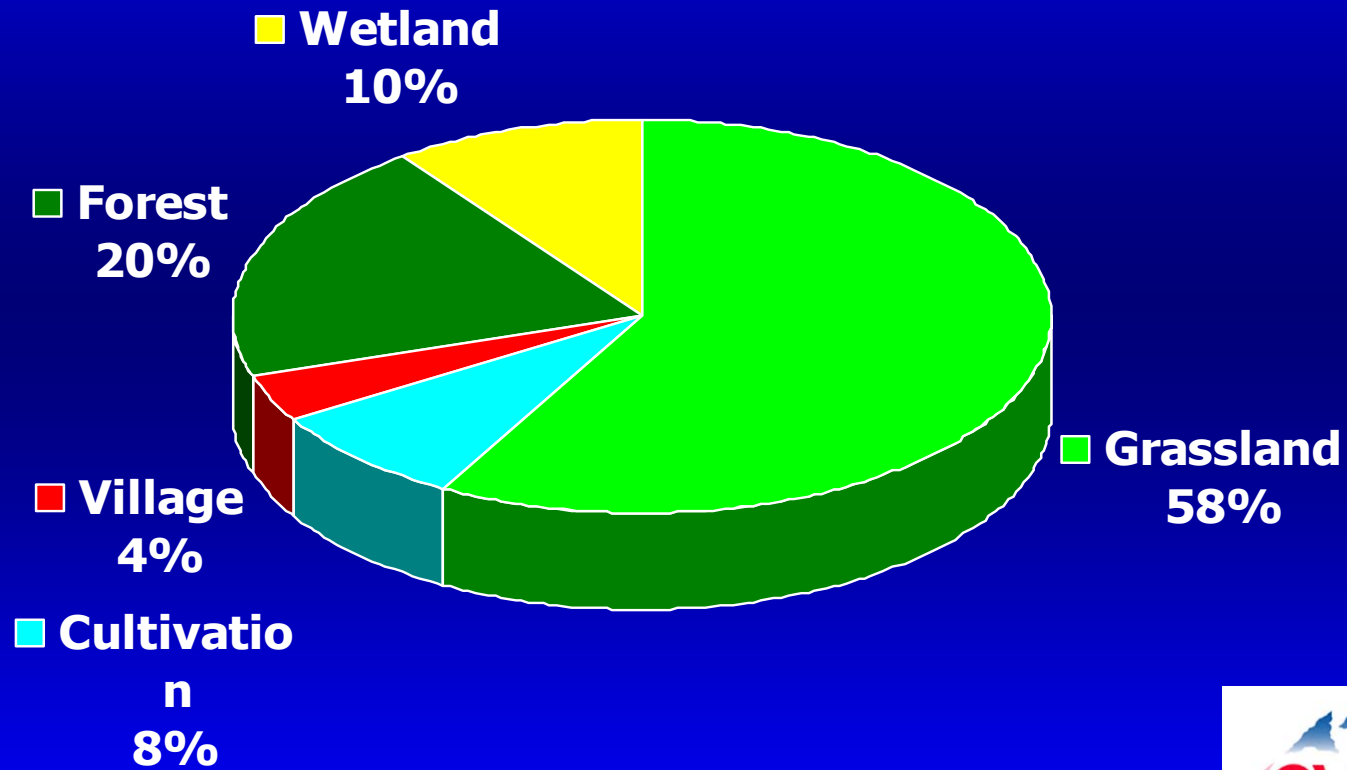


CATCHMENT AREA

- LAND USE

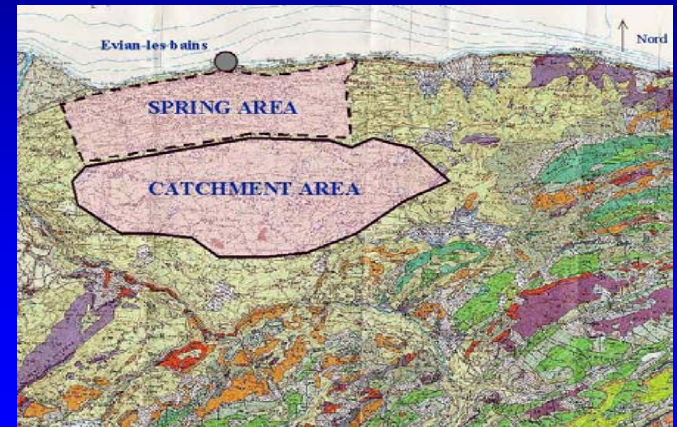


LAND USE



CATCHMENT AREA

- LAND USE
- APIEME 's CREATION : 1992
 - Targets :
 - Maintain the rural aspect
 - favour a strong agriculture with good practice
 - management policy about wetland area



Evian-les-bains

Nord

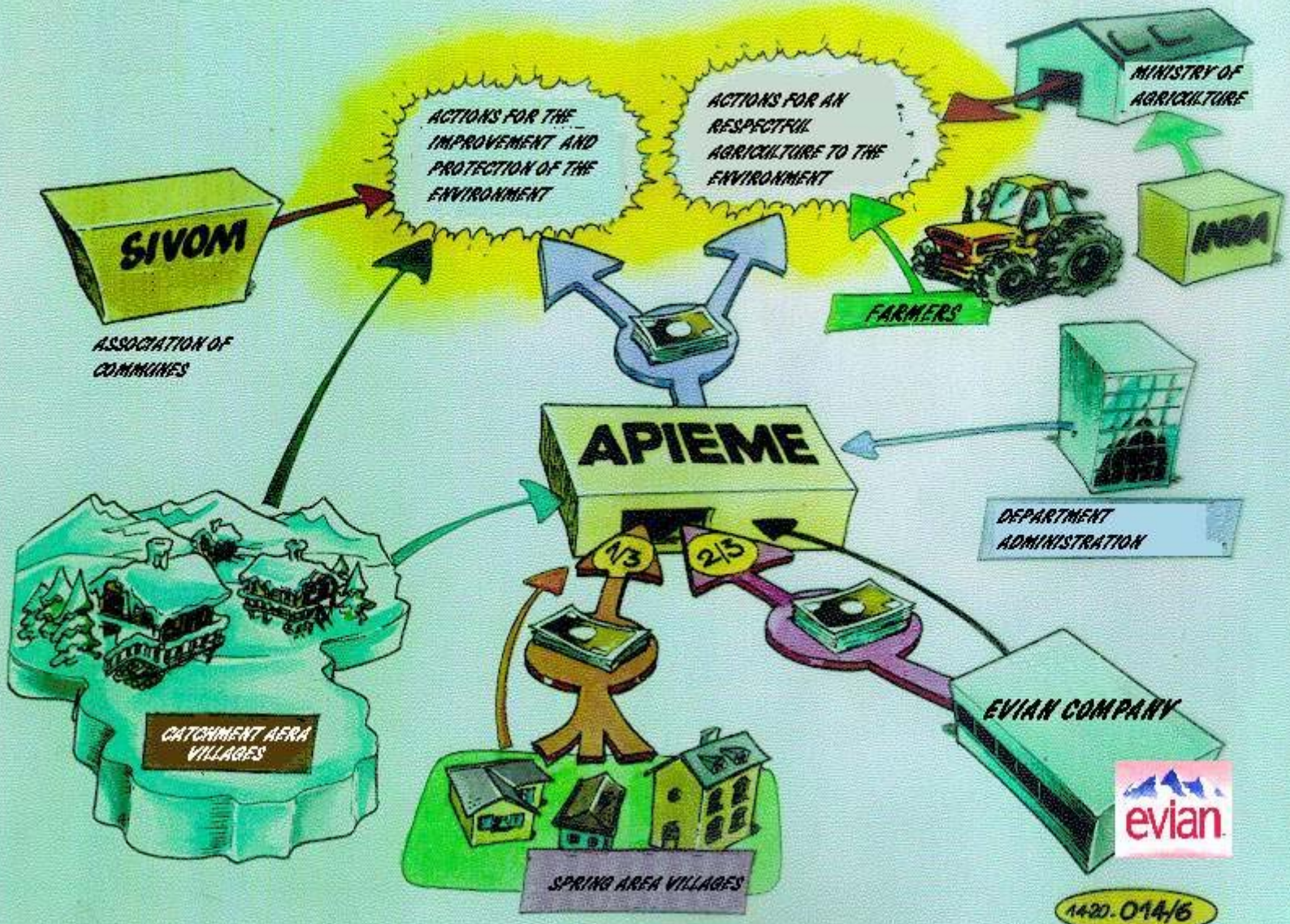
SPRING AREA

CATCHMENT AREA



● Spring Area Villages

● Catchment Area Villages



CATCHMENT AREA

- LAND USE
- APIEME 's CREATION : 1992
 - Targets :
 - Maintain the rural aspect
 - favour a strong agriculture with good practice
 - management policy about wetland area
- Water Quality Observation Tool



