

Project „Enhancing the restoration, climate resilience and biodiversity value of priority forest habitats within Natura 2000 SCIs“
LIFE19 NAT/BG/000986 – LIFE REFOREST

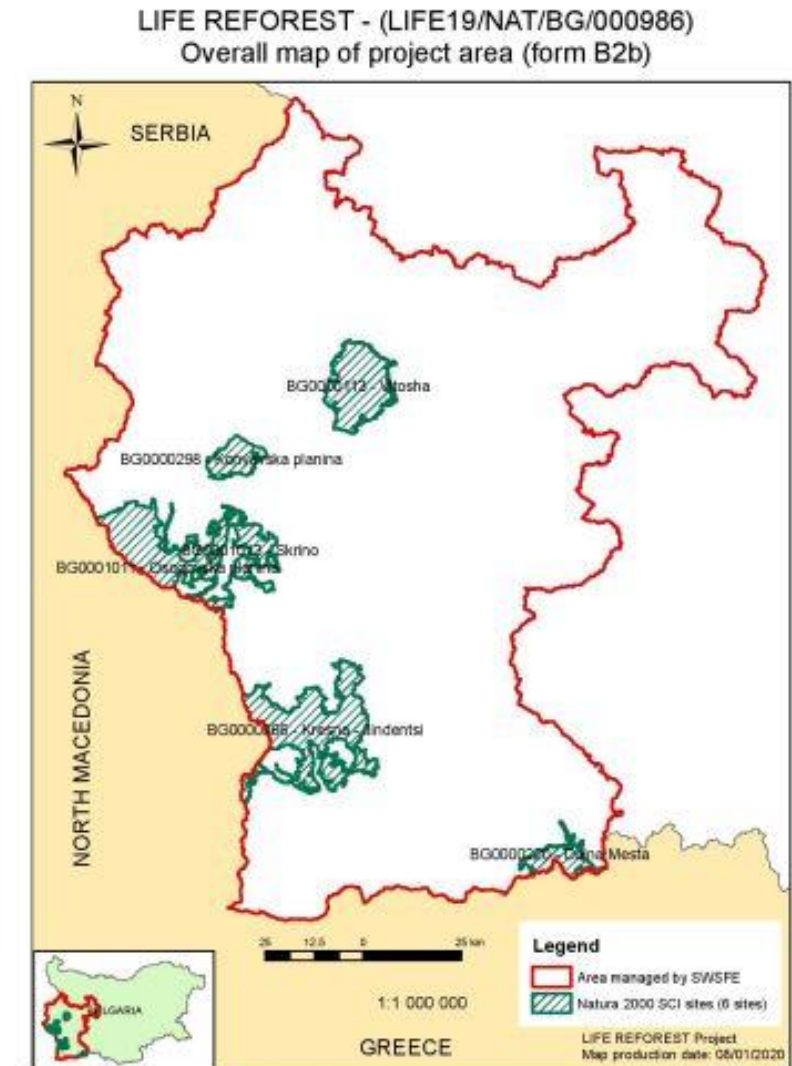


OBJECTIVES & SCOPE

LIFE REFOREST aims to enhance the restoration of damaged forest habitats within Natura 2000 SCIs by demonstrating best practices, incorporating climate modelling, improving forestry policies, involving key stakeholders, replicating the best practices and utilizing the capacity of previous LIFE projects.

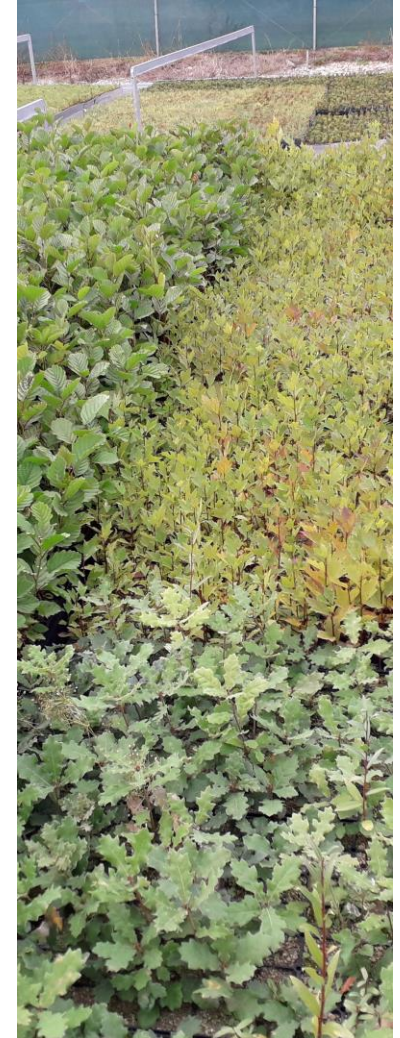
Project conservation actions include:

- C.1 Collection and processing of forest reproductive material;
- C.2 Production of seedlings for reforestation;
- C.3 Restoration of priority forest habitats;
- C.4 Providing input for the improvement of forestry policies and normative documents.



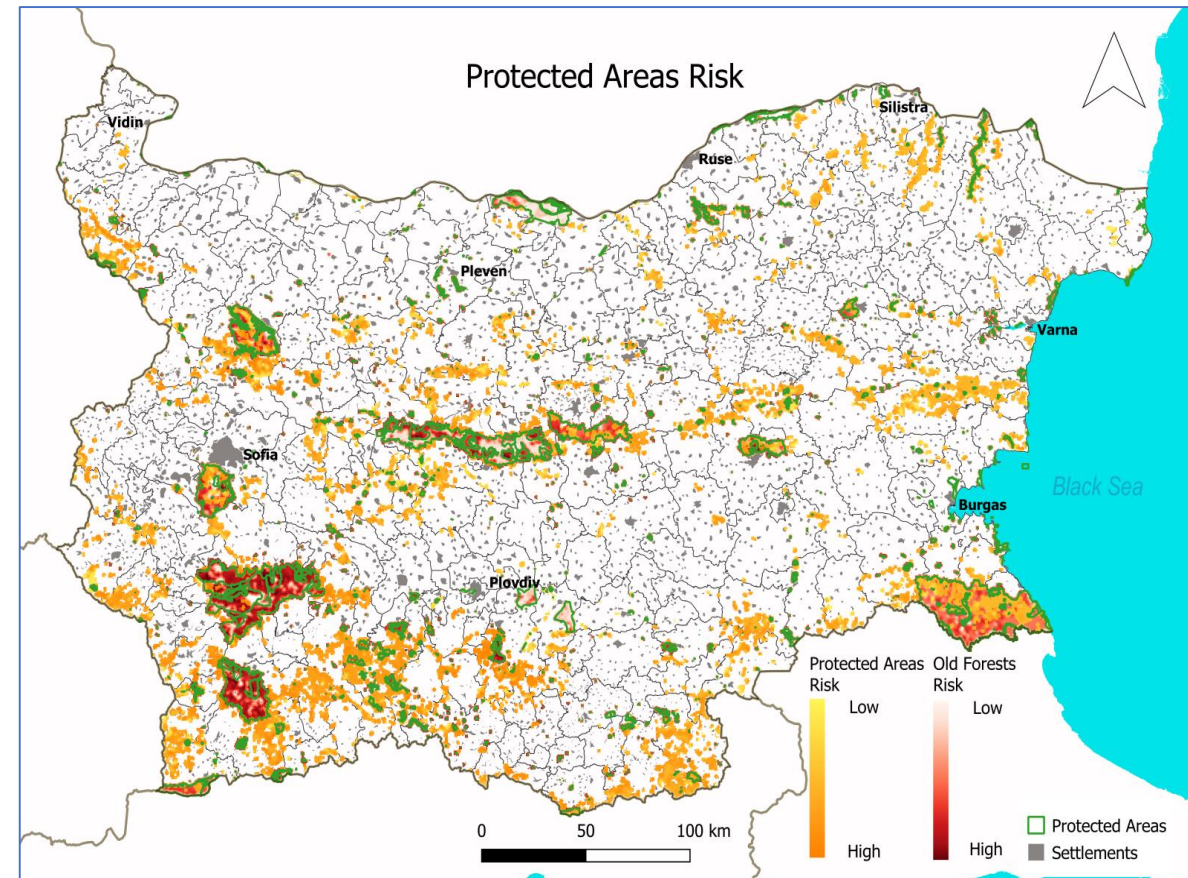
Expected project impacts

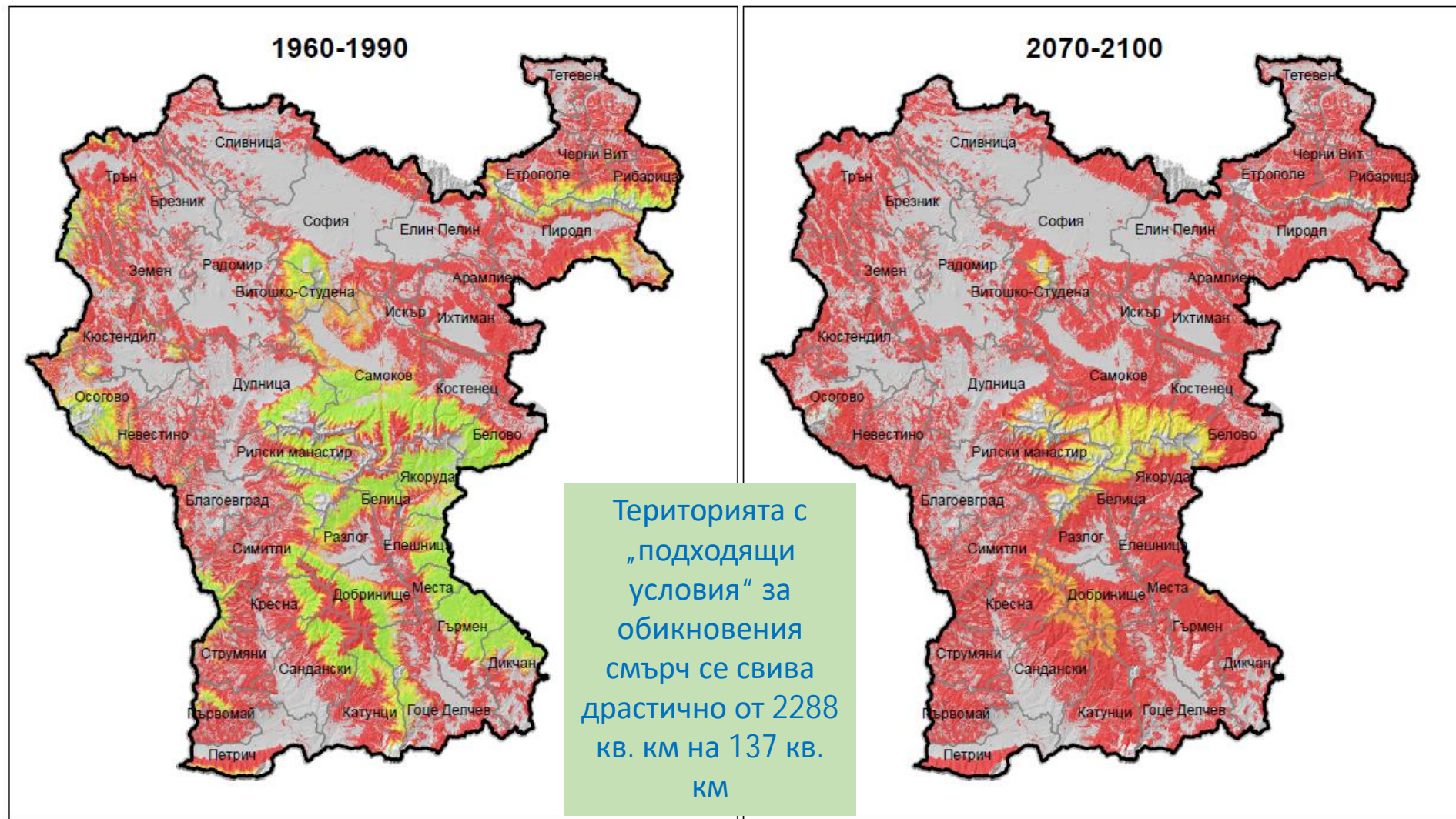
- Restored 275 ha of 5 Annex I priority forest habitats damaged by nature hazards within 6 SCIs in Southwestern Bulgaria;
- Developed expert analysis with GIS data base related to forest habitat requirements and climate change scenarios for Bulgaria;
- Improved national forestry policies through streamlining climate and biodiversity concerns;
- Established capacity for priority habitat restoration in non-state forests;
- Established baseline for further replication of project results on EU level.



Project preparation & conservation actions

- Developed expert analysis with GIS data base related to forest habitat requirements and climate change scenarios for Bulgaria;
- Contribution to the improvement of national forestry policies through streamlining climate and biodiversity concerns – a proposal for update of key documents was developed by assigned project expert team and submitted to the Executive Forestry Agency;
- Developed Project Restoration Program for the restoration of target priority habitats which was approved by the Ministry of Environment and Water.

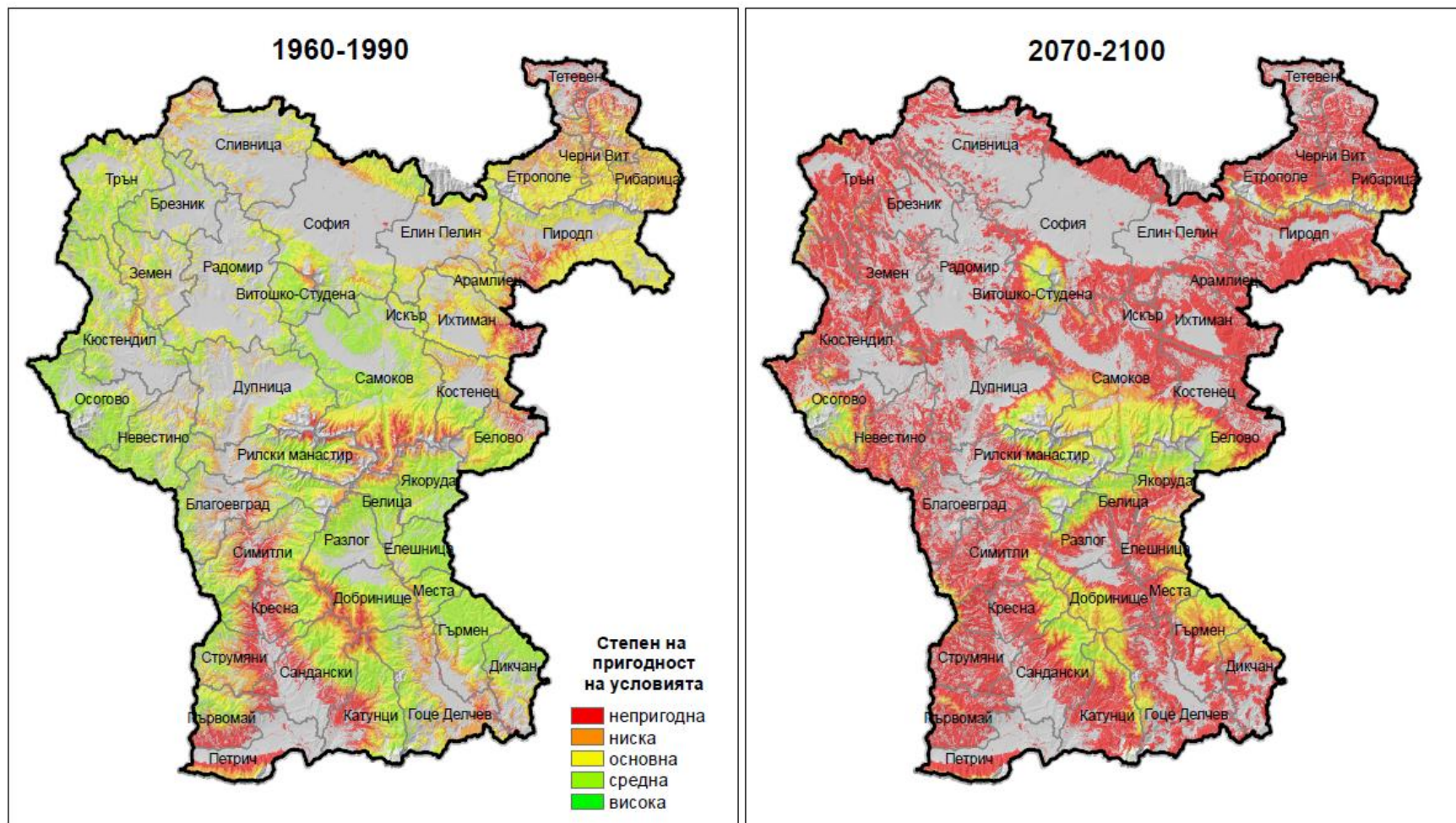




Ниска пригодност на условията ($>0.3, <0.5$): 992 кв.км.
Висока пригодност на условията (>0.5): 2288 кв.км.

Ниска пригодност на условията ($0.3, <0.5$): 579 кв.км.
Висока пригодност на условията (>0.5): 137 кв.км.

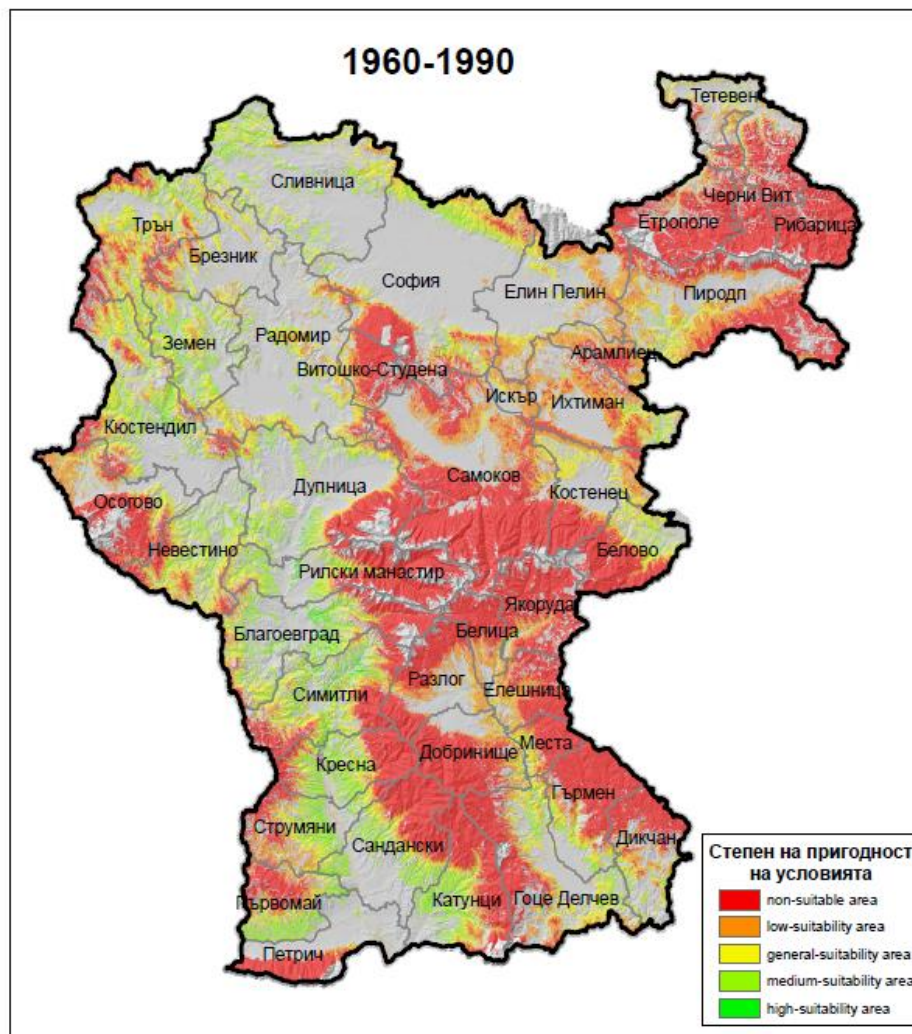
Project preparation & conservation actions



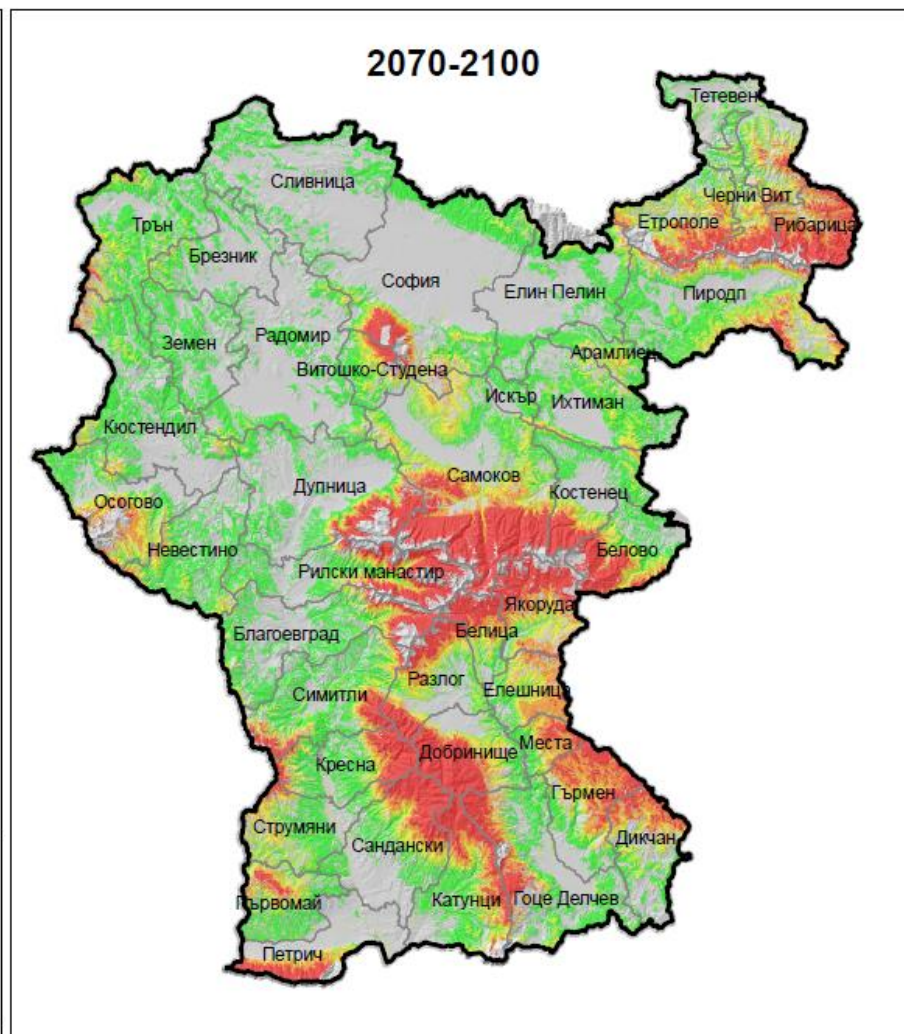
Ниска пригодност на условията ($>0.3, <0.5$): 2678 кв.км.
Висока пригодност на условията (>0.5): 6143 кв.км.

Ниска пригодност на условията ($0.3, <0.5$): 1156 кв.км.
Висока пригодност на условията (>0.5): 1363 кв.км.

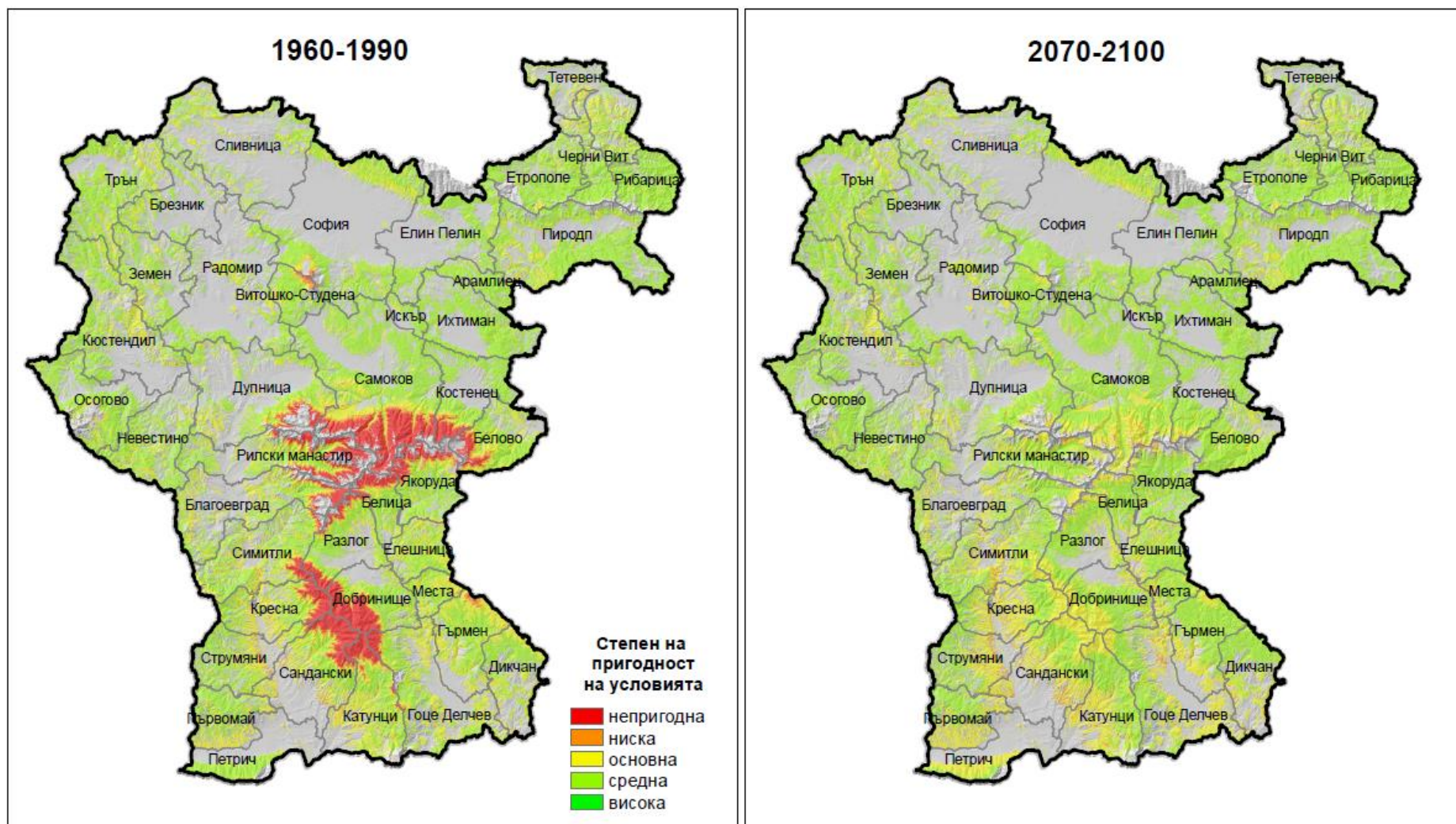
Бял бор (*Pinus sylvestris*), моделиране на екологична ниша с MaxEnt за ЮЗДП



Ниска пригодност на условията: 2022 кв. км.
Висока пригодност на условията: 2398 кв. км.



Ниска пригодност на условията: 1177 кв. км.
Висока пригодност на условията: 6630 кв. км.



Ниска пригодност на условията (>0.3 , <0.5): 739 кв.км.
Висока пригодност на условията (>0.5): 8967 кв.км.

Ниска пригодност на условията (0.3 , <0.5): 953 кв.км.
Висока пригодност на условията (>0.5): 9694 кв.км.

Обикновен бук (*Fagus sylvatica*), моделиране на екологична ниша с MaxEnt за ЮЗДП

Project conservation actions

- Collected over 10,000 kg of species from 18 forest species – most of which already used for seedling production;
- Produced over 2.5 containerized seedlings used for project reforestation actions;
- Delivered and installed prefabricated building for Forest Information Center at Lokorsko project nursery, developed project for center exhibition, ongoing work for exhibition installation;
- Produced information & training materials for Forest Information Center;
- Organized series of information, training & capacity building activities;
- Ensured replication and continuation of project results & impacts on a larger scale.



Project conservation actions

ЗОНА		м.8.4.	Лайф Клима	Лайф19	ОПОС	стопанска	компенсаци онно	ФИГ	ОБЩО
КРЕСНА-ИЛИНДЕНЦИ	BG0000366	1113	0	554,5	0	0	128	19	1814,5
СКРИНО	BG0001013	0	0	343	20	77	25	30	495
ОСОГОВСКА ПЛАНИНА	BG0001011	0	0	121	133	0	0	0	254
КОНЯВСКА ПЛАНИНА	BG0000298	0	0	25	0	0	0	0	25
ДОЛНА МЕСТА	BG0000220	0	17	270	365	25	0	0	677
РЕКА МЕСТА	BG0001021	0	0	30	0	8	0	0	38
ОГРАЖДЕН - МАЛАШЕВО	BG0000224	0	0	325	0	0	0	0	325
ОБЩО		1113	17	1668,5	518	110	153	49	3628,5

SWSE Conservation actions



SWSE Conservation actions



SWSE Conservation actions



SWSE Conservation actions



SWSE Conservation actions



SWSE Conservation actions



SWSE Conservation actions



SWSE Conservation actions



SWSE Conservation actions



SWSE Conservation actions



SWSE Conservation actions



SWSE Conservation actions



Public Awareness and Dissemination of Results



Experience Exchange Trips

Three 3-day study visit with experts in NE Bulgaria, SW Bulgaria and Northern Greece

- 70 forestry specialists participated in experience exchange trips
- 15 forestry specialists participated in two or three of the trips (15 out of 70)
- 39 different institutions and organizations:
 - 28 different units from the state forestry system;
 - 4 Greek state forestry institutions,
 - 1 research organization,
 - 6 NGOs incl. two unions of non-state forest owners
- 17 sites with different restoration practices and forest ages discussed;

Experience exchange trips



#lifeREforest

International Conference

- 68 forestry specialists and/or conservation experts registered;
- 8 countries: Greece, Hungary, North Macedonia, Romania, Poland, Slovakia, Spain
- 23 institutions/organisations: incl. 15 state institutions, 2 research institutions, 6 NGOs
- 15 lecturers

Forest Newsletter

*Regular Project Forest Newsletter to professional groups
Together with LIFECLIMAFORCEE and other projects*



- *First issue sent in 2022 to 256 unique addresses*
- *440 unique addresses in June 2024.*
- *5 issues have been broadcasted*



Уважаеми читатели,

Лятото започна - време е за новото издание на Горски бюлетин на WWF България. В брой 5 споделяме най-важното от работата на Горската програма за първата половина на 2024 г.

Учене през целия живот



Продължават усилията на Горската програма за принос към обмяната на практичен и иновативен опит в лесовъдството на страната. Вярваме, че по този начин всички, работещи в сферата, заедно ще можем да подобрим начина, по който се управляват и опазват горите в България. Чрез обучения и обмен на знания се готвим по-добре и за новите предизвикателства.

#lifeREforest

Volunteer Actions



- 4 volunteer actions, support days at the nursery

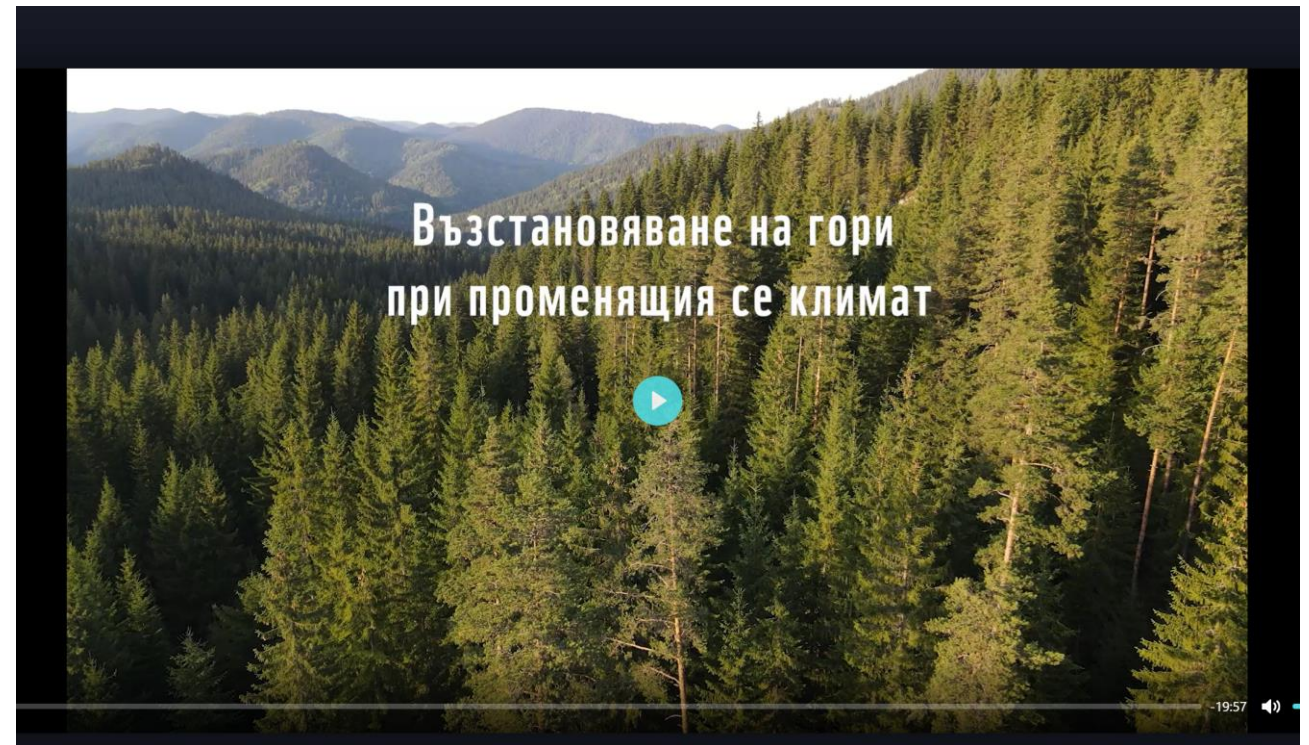


#lifeREforest

Films and videos – coming soon



- *One film targeting forestry professionals*
- *One film targeting general audience*



#lifeREforest 

Awareness Raising on Social Media

- *Four Awareness Raising Social Media Series*
 - *Forest tree species and habitats, targeted by the project*
 - *Why is forest restoration important?*
 - *Successful forest restoration*
 - *Forest fires*



#lifeREforest

Awareness Raising on Social Media

- 132 publications on WWF social networks reached by 710 312. Total engagements nearly 40 000
- Posts are collected in dedicated albums on Facebook and Instagram profiles:
 - [Restoration of forest habitats/ #LifeREforest](#)

TOTAL till October, 2023

Channel	Posts	Reach	Engagement
Facebook	66	604 674	31 793
Instagram	50	99 703	6654
LinkedIn	16	5935	251
TOTAL	132	710312	38698



#lifeREforest

Exhibition



- 28 boards
- 4 x Sofia
- 6 other cities

#lifeREforest

Exhibition

КРАЙРЕЧНИ ГОРИ



Това е жабата с най-дълъг отскок у нас. Наведнъж тя може да преодолее разстояние от 2 метра – впечатляващо за нейните размери.

This is the frog with the longest jump in Bulgaria. In one go, it can cover a distance of 2 meters – impressive for its size.



Деница Пенева. Горска жаба. Agile frog (*Rana dalmatina*).



Георги Пчеларов. Летен дъб. Pedunculate oak (*Quercus robur*).



Летният дъб може да достигне възраст над 1000 г.

The pedunculate oak can reach an age of over 1000 years.

RIPARIAN FORESTS



Георги Пчеларов. Среден пъстър кълвач. Middle spotted woodpecker (*D. medius*).
Малък пъстър кълвач. Lesser spotted woodpecker (*Dendrocopos minor*).

В миналото крайречните гори са се срещали на много места в България, но днес са запазени частично само по дунавските острови, реките Камчия, Ропотамо, Тунджа и островите на река Марица. Това се дължи основно на изчищането им – за дигиране и изправяне на реки с цел освобождаване на земи за земеделие, за строеж на язовири, за добив на инертни материали и др.

Унищожаването им води не само до негативни последици за животните, които зависят от тях за храна и дом, но и за нас – хората. Ето защо опазването и възстановяването на крайречните гори е една от най-важните мисии на WWF България и нейните партньори.

In the past, riparian forests were found in many places in Bulgaria, but today they are partially preserved only on the Danube islands, along the rivers Kamchia, Ropotamo, Tundzha, and on the islands of the Maritsa river. This is mainly due to their felling for diking and straightening of rivers in order to free up land for agriculture, construction of dams, extraction of inert materials, etc.

Their destruction leads not only to negative consequences for the animals that depend on them for food and shelter, but it also poses serious risks to us humans. That is why the restoration of riparian forests is among the main priorities of WWF Bulgaria and its partners.



#lifeREforest



#lifeREforest

Exhibition



#lifeREforest

Natura 2000 Day 2024 in Blagoevgrad

- *One-day event, organized together with Regional History Museum - exhibition, music, games and films, devoted to nature protection and forest restoration*
- *400 visitors*



Thanks for your attention!



ttodorov@uzdp.bg
kvalchev@wwf.bg
tschnell@wwf.bg



www.wwf.bg, www.uzdp.bg



#LifeREforest

#lifeREforest 